

PARTS LIST

CAUTION

- The parts identified by the \triangle symbol are important for the safety. Whenever replacing these parts, be sure to use specified ones to secure the safety.
- The parts not indicated in this Parts List and those which are filled with lines — in the Parts No. columns will not be supplied.
- P. W. Board Ass'y will not be supplied, but those which are filled with the Parts No. in the Parts No. columns will be supplied.

ABBREVIATIONS OF RESISTORS, CAPACITORS AND TOLERANCES

RESISTORS		CAPACITORS	
C R	Carbon Resistor	C CAP.	Ceramic Capacitor
F R	Fusible Resistor	E CAP.	Electrolytic Capacitor
P R	Plate Resistor	M CAP.	Mylar Capacitor
V R	Variable Resistor	HV CAP.	High Voltage Capacitor
HV R	High Voltage Resistor	MF CAP.	Metalized Film Capacitor
MF R	Metal Film Resistor	MM CAP.	Metalized Mylar Capacitor
MG R	Metal Glazed Resistor	MP CAP.	Metalized Polystyrol Capacitor
MP R	Metal Plate Resistor	PP CAP.	Polypropylene Capacitor
OM R	Metal Oxide Film Resistor	PS CAP.	Polystyrol Capacitor
CMF R	Coating Metal Film Resistor	TF CAP.	Thin Film Capacitor
UNF R	Non-Flammable Resistor	MPP CAP.	Metalized Polypropylene Capacitor
CH V R	Chip Variable Resistor	TAN. CAP.	Tantalum Capacitor
CH MG R	Chip Metal Glazed Resistor	CH C CAP.	Chip Ceramic Capacitor
COMP. R	Composition Resistor	BP E CAP.	Bi-Polar Electrolytic Capacitor
LPTC R	Linear Positive Temperature Coefficient Resistor	CH AL E CAP.	Chip Aluminum Electrolytic Capacitor
		CH AL BP CAP.	Chip Aluminum Bi-Polar Capacitor
		CH TAN. E CAP.	Chip Tantalum Electrolytic Capacitor
		CH AL BP E CAP.	Chip Tantalum Bi-Polar Electrolytic Capacitor

TOLERANCES									
F	G	J	K	M	N	R	H	Z	P
±1%	±2%	±5%	±10%	±20%	±30%	+30% -10%	+50% -10%	+80% -20%	+100% -0%

CONTENTS

■ USING PW BOARD & REMOTE CONTROL UNIT	39
■ EXPLODED VIEW PARTS LIST	39, 40
■ EXPLODED VIEW	39, 41
■ PRINTED WIRING BOARD PARTS LIST	
● MAIN PW BOARD ASS'Y	42
● BLK. PW BOARD ASS' Y	44
● POWER & DEF. PW BOARD ASS' Y	45
● CRT SOCKET PW BOARD ASS'Y	47
● FRONT CONTROL PW BOARD ASS'Y	48
● MICOM PW BOARD ASS'Y [SMF-0M701A]	48
● MICOM PW BOARD ASS'Y [SMF-0M702A]	50
● MICOM PW BOARD ASS'Y [SMF-0M703A]	52
● MICOM PW BOARD ASS'Y [SMF-0M704A]	54
● AV SW PW BOARD ASS'Y	56
● 100Hz PW BOARD ASS'Y	57
■ REMOTE CONTROL UNIT PARTS LIST	59
■ PACKING	60
■ PACKING PARTS LIST	61

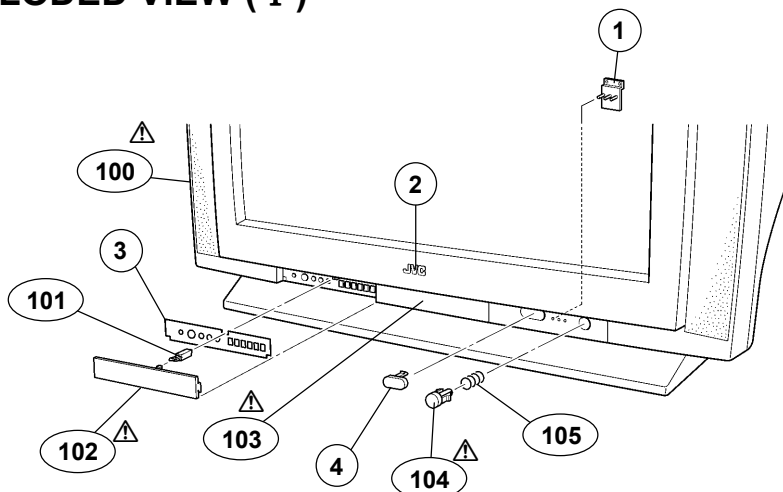
USING PW BOARD & REMOTE CONTROL UNIT

Model PWB ASS'Y	HV-34LZ	HV-34LZ/HK	HV-34LZ/-A	HV-34LZ/EE
MAIN PWB	SMF-1701A	←	←	←
BLK PWB (Within MAIN PWB)	SMF-0V502A	←	←	←
POWER&DEF. PWB	SMF-2701A	←	←	←
CRT SOCKET PWB	SMF-3701A	←	←	←
FRONT CONTROL PWB	SMF-8701A	←	←	←
MICOM PWB	SMF-0M701A	SMF-0M702A	SMF-0M703A	SMF-0M704A
AV SW PWB	SMF-0S701A	←	←	←
100Hz PWB	SMF-0Z701A	←	←	←
REMOTE CONTROL UNIT	RM-C1030-1H	RM-C1031-2H	RM-C1030-1H	←

EXPLODED VIEW PARTS LIST (I)

△ Ref.No.	Part No.	Part Name	Description
1	LC31476-002B-H	LED LENS	
2	LC41037-001A	JVC MARK	[HV-34LZ]
2	LC41037-003A	JVC MARK	[HV-34LZ/HK]
2	LC41037-001A	JVC MARK	[HV-34LZ/-A]
2	LC41037-001A	JVC MARK	[HV-34LZ/EE]
3	LC20778-003A-H	OPERATION SHEET	
4	LC31474-001A-H	CONTROL WINDOW	
△ 100	LC11231-008C-H	F.CABINET ASSY	Inc. No.101~105
101	CM48229-00A-C	DOOR LATCH	
△ 102	LC20776-016B-H	DOOR	
△ 103	LC20777-004A-H	CENTER PLATE	
△ 104	LC31475-003A-H	POWER KNOB	
105	CM30861-069	SPRING	

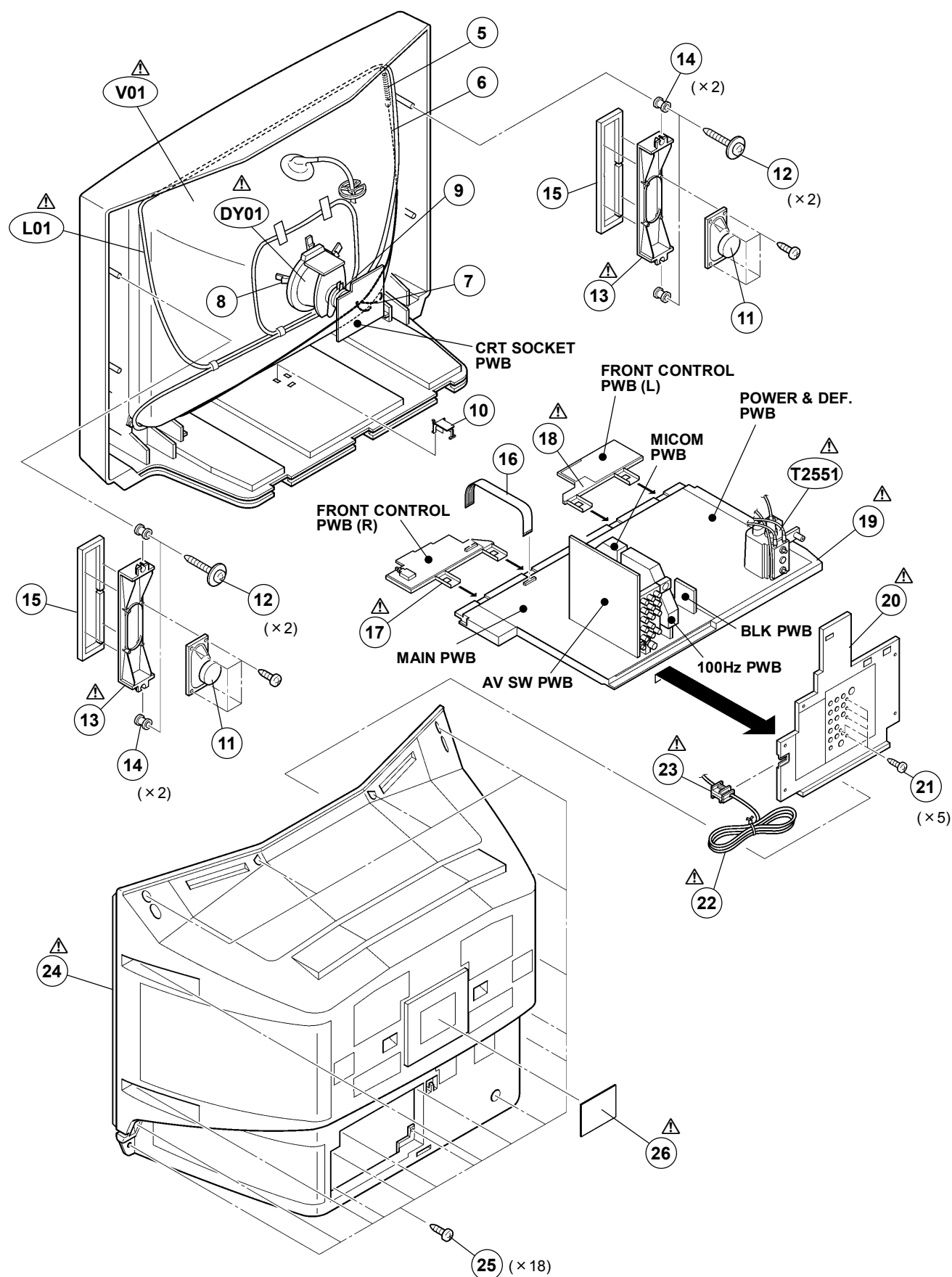
EXPLODED VIEW (I)



EXPLODED VIEW PARTS LIST (II)

△ Ref.No.	Part No.	Part Name	Description
△ V01	A80LTM350X	PICTURE TUBE	
△ L01	QQW0121-001	DEG COIL	
△ DY01	QQD0058-001	DEF YOKE	
△ T2551	QQH0099-001	FB TRANSF	
5	A48457-1	SPRING	
6	WJY0008-005A	E-BRAIDED ASSY	
7	WJY0013-002A	E-BRAIDED ASSY (SUB)	
8	CE41488-00A	WEDGE ASSY	(×4)
9	CE42733-00A	PC MAGNET	
10	LC30103-001B-H	CHASSIS ADAPTER	
11	QAS0083-001	SPEAKER	(×2) SP01, SP02
12	LC40317-002A-H	TAP SCREW	(×4)
△ 13	LC11100-001A-H	SP HOLDER	(×2)
14	LC40226-003A-H	SPACER	(×4)
15	LC30599-005A	STICK SHEET	(×6)
16	CHFB125-08BD-N	FFC WIRE	
△ 17	LC11065-001A-H	CONTROL BASE(R)	
△ 18	LC11065-002A-H	CONTROL BASE(L)	
△ 19	LC10764-001A-H	CHASSIS BASE	
△ 20	LC10766-002A-H	AV BOARD	
21	QYSBSF3012M	TAP SCREW	(×5)
△ 22	QMP40D0-200J5	POWER CORD	or QMP40D0-200J3 [HV-34LZ]
△ 22	QMPN050-200-E2	POWER CORD	[HV-34LZ/HK]
△ 22	QMPR010-200-E2	POWER CORD	or QMPR010-200-K2 [HV-34LZ/-A]
△ 22	QMP40D0-200J5	POWER CORD	[HV-34LZ/EE]
△ 23	CM23167-A01-H	POWER CORD CLAMP	
△ 24	LC10180-003A-HH	REAR COVER	[HV-34LZ]
△ 24	LC10180-005A-H	REAR COVER	[HV-34LZ/HK]
△ 24	LC10180-003A-HH	REAR COVER	[HV-34LZ/-A]
△ 24	LC10180-003A-HH	REAR COVER	[HV-34LZ/EE]
25	QYSBSFG4016Z	TAP SCREW	(×18)
△ 26	GG20024-001A-H	RATING LABEL	
--	QQR0491-001	CORE FILTER	

EXPLODED VIEW (II)



PRINTED WIRING BOARD PARTS LIST

■ MAIN P.W. BOARD ASS'Y (SMF-1701A)

△ Symbol No. Part No. Part Name Description

RESISTOR

R1004	NRSA63J-101X	MG R	100Ω 1/16W J
R1005	NRSA63J-101X	MG R	100Ω 1/16W J
R1006	NRSA63J-0R0X	MG R	0.0Ω 1/16W J
R1008	NRSA63J-0R0X	MG R	0.0Ω 1/16W J
R1101	NRSA63J-102X	MG R	1kΩ 1/16W J
R1102	NRSA63J-181X	MG R	180Ω 1/16W J
R1103	NRSA63J-222X	MG R	2.2kΩ 1/16W J
R1104	NRSA63J-102X	MG R	1kΩ 1/16W J
R1105	NRSA63J-331X	MG R	330Ω 1/16W J
R1106	NRSA63J-270X	MG R	27Ω 1/16W J
R1107	NRSA63J-271X	MG R	270Ω 1/16W J
R1108	NRSA63J-102X	MG R	1kΩ 1/16W J
R1109	NRSA63J-101X	MG R	100Ω 1/16W J
R1110	NRSA63J-101X	MG R	100Ω 1/16W J
R1111	NRSA63J-101X	MG R	100Ω 1/16W J
R1301	NRSA63J-101X	MG R	100Ω 1/16W J
R1302	NRSA63J-101X	MG R	100Ω 1/16W J
R1303	NRSA63J-273X	MG R	27kΩ 1/16W J
R1304	NRSA63J-102X	MG R	1kΩ 1/16W J
R1311	NRSA63J-472X	MG R	4.7kΩ 1/16W J
R1312	NRSA63J-273X	MG R	27kΩ 1/16W J
R1313	NRSA63J-183X	MG R	18kΩ 1/16W J
R1314	NRSA63J-221X	MG R	220Ω 1/16W J
R1315	NRSA63J-101X	MG R	100Ω 1/16W J
R1316	NRSA63J-101X	MG R	100Ω 1/16W J
R1317	NRSA63J-101X	MG R	100Ω 1/16W J
R1318	NRSA63J-562X	MG R	5.6kΩ 1/16W J
R1319	NRSA63J-183X	MG R	18kΩ 1/16W J
R1321	NRSA63J-0R0X	MG R	0.0Ω 1/16W J
R1322	NRSA63J-0R0X	MG R	0.0Ω 1/16W J
R1323	NRSA63J-332X	MG R	3.3kΩ 1/16W J
R1324	NRSA63J-332X	MG R	3.3kΩ 1/16W J
R1325	NRSA63J-101X	MG R	100Ω 1/16W J
R1326	NRSA63J-682X	MG R	6.8kΩ 1/16W J
R1401	NRSA63J-102X	MG R	1kΩ 1/16W J
R1402	NRSA63J-102X	MG R	1kΩ 1/16W J
R1403	NRSA63J-331X	MG R	330Ω 1/16W J
R1404	NRSA63J-331X	MG R	330Ω 1/16W J
R1405	NRSA63J-102X	MG R	1kΩ 1/16W J
R1406	NRSA63J-102X	MG R	1kΩ 1/16W J
R1451	NRSA63J-821X	MG R	820Ω 1/16W J
R1454	NRSA63J-472X	MG R	4.7kΩ 1/16W J
R1455	NRSA63J-123X	MG R	12kΩ 1/16W J
R1456	NRSA63J-123X	MG R	12kΩ 1/16W J
R1457	NRSA63J-392X	MG R	3.9kΩ 1/16W J
R1458	NRSA63J-123X	MG R	12kΩ 1/16W J
R1459	NRSA63J-472X	MG R	4.7kΩ 1/16W J
R1461	NRSA63J-123X	MG R	12kΩ 1/16W J
R1462	NRSA63J-153X	MG R	15kΩ 1/16W J
R1463	NRSA63J-124X	MG R	120kΩ 1/16W J
R1465	NRSA63J-224X	MG R	220kΩ 1/16W J
R1466	NRSA63J-224X	MG R	220kΩ 1/16W J
R1467	NRSA63J-563X	MG R	56kΩ 1/16W J
R1468	NRSA63J-224X	MG R	220kΩ 1/16W J
R1469	NRSA63J-683X	MG R	68kΩ 1/16W J
R1470	NRSA63J-223X	MG R	22kΩ 1/16W J
R1471	NRSA63J-273X	MG R	27kΩ 1/16W J
R1472	NRSA63J-682X	MG R	6.8kΩ 1/16W J
R1473	NRSA63J-822X	MG R	8.2kΩ 1/16W J
R1474	NRSA63J-563X	MG R	56kΩ 1/16W J
R1475	NRSA63J-153X	MG R	15kΩ 1/16W J
R1476	NRSA63J-123X	MG R	12kΩ 1/16W J
R1477	NRSA63J-123X	MG R	12kΩ 1/16W J
R1478	NRSA63J-123X	MG R	12kΩ 1/16W J
R1479	NRSA63J-154X	MG R	150kΩ 1/16W J
R1480	NRSA63J-823X	MG R	82kΩ 1/16W J
R1481	NRSA63J-472X	MG R	4.7kΩ 1/16W J
R1482	NRSA63J-272X	MG R	2.7kΩ 1/16W J
R1483	NRSA63J-472X	MG R	4.7kΩ 1/16W J
R1484	NRSA63J-473X	MG R	47kΩ 1/16W J
R1485	NRSA63J-123X	MG R	12kΩ 1/16W J
R1486	NRSA63J-472X	MG R	4.7kΩ 1/16W J
R1487	NRSA63J-563X	MG R	56kΩ 1/16W J
R1489	NRSA63J-124X	MG R	120kΩ 1/16W J
R1491	NRSA63J-332X	MG R	3.3kΩ 1/16W J

△ Symbol No. Part No. Part Name Description

RESISTOR

R1492	NRSA63J-562X	MG R	5.6kΩ 1/16W J
R1501	NRSA63J-0R0X	MG R	0.0Ω 1/16W J
R1504	NRSA63J-102X	MG R	1kΩ 1/16W J
R1511	NRSA63J-152X	MG R	1.5kΩ 1/16W J
R1512	NRSA63J-332X	MG R	3.3kΩ 1/16W J
R1521	NRSA63J-223X	MG R	22kΩ 1/16W J
R1522	NRSA63J-562X	MG R	5.6kΩ 1/16W J
R1551	NRSA63J-100X	MG R	10Ω 1/16W J
R1552	NRSA63J-124X	MG R	120kΩ 1/16W J
R1553	NRSA63J-683X	MG R	68kΩ 1/16W J
R1554	NRSA63J-562X	MG R	5.6kΩ 1/16W J
R1555	NRSA63J-333X	MG R	33kΩ 1/16W J
R1556	NRSA63J-472X	MG R	4.7kΩ 1/16W J
R1557	NRSA63J-562X	MG R	5.6kΩ 1/16W J
R1558	NRSA63J-104X	MG R	100kΩ 1/16W J
R1559	NRSA63J-154X	MG R	150kΩ 1/16W J
R1560	NRSA63J-100X	MG R	10Ω 1/16W J
R1561	QRN143J-0R0X	C R	0.0Ω 1/4W J
R1562	NRSA63J-683X	MG R	68kΩ 1/16W J
R1563	NRSA63J-103X	MG R	10kΩ 1/16W J
R1564	NRSA63J-223X	MG R	22kΩ 1/16W J
R1565	NRSA63J-562X	MG R	5.6kΩ 1/16W J
R1574	NRSA63J-101X	MG R	100Ω 1/16W J
R1591	NRSA63J-561X	MG R	560Ω 1/16W J
R1592	NRSA63J-332X	MG R	3.3kΩ 1/16W J
R1595	NRSA63J-222X	MG R	2.2kΩ 1/16W J
R1596	NRSA63J-104X	MG R	100kΩ 1/16W J
R1601	NRSA63J-0R0X	MG R	0.0Ω 1/16W J
R1603	NRSA63J-223X	MG R	22kΩ 1/16W J
R1604	NRSA63J-0R0X	MG R	0.0Ω 1/16W J
R1606	NRSA63J-223X	MG R	22kΩ 1/16W J
R1607	QRK126J-4R7X	C R	4.7Ω 1/2W J
R1608	QRK126J-4R7X	C R	4.7Ω 1/2W J
R1610	NRSA63J-273X	MG R	27kΩ 1/16W J
R1611	NRSA63J-104X	MG R	100kΩ 1/16W J
R1612	NRSA63J-682X	MG R	6.8kΩ 1/16W J
R1613	NRSA63J-103X	MG R	10kΩ 1/16W J
R1614	NRSA63J-104X	MG R	100kΩ 1/16W J
R1615	NRSA63J-472X	MG R	4.7kΩ 1/16W J
R1616	NRSA63J-752X	MG R	7.5kΩ 1/16W J
R1617	NRSA63J-222X	MG R	2.2kΩ 1/16W J
R1618	NRSA63J-103X	MG R	10kΩ 1/16W J
R1619	NRSA63J-683X	MG R	68kΩ 1/16W J
R1620	NRSA63J-333X	MG R	33kΩ 1/16W J
R1623	NRSA63J-222X	MG R	2.2kΩ 1/16W J
R1624	NRSA63J-333X	MG R	33kΩ 1/16W J
R1625	NRSA63J-103X	MG R	10kΩ 1/16W J
R1626	NRSA63J-103X	MG R	10kΩ 1/16W J
R1627	NRSA63J-333X	MG R	33kΩ 1/16W J
R1628	NRSA63J-334X	MG R	330kΩ 1/16W J
R1629	NRSA63J-334X	MG R	330kΩ 1/16W J
R1661	NRSA63J-0R0X	MG R	0.0Ω 1/16W J
R1662	NRSA63J-0R0X	MG R	0.0Ω 1/16W J
R1691	NRSA63J-101X	MG R	100Ω 1/16W J
R1692	NRSA63J-101X	MG R	100Ω 1/16W J
R1772	NRSA63J-221X	MG R	220Ω 1/16W J
R1773	NRSA63J-221X	MG R	220Ω 1/16W J
R1774	NRSA63J-221X	MG R	220Ω 1/16W J
R1775	NRSA63J-221X	MG R	220Ω 1/16W J
R1776	NRSA63J-221X	MG R	220Ω 1/16W J
R1951	QRK126J-560X	C R	56Ω 1/2W J
R1952	QRK126J-1R0X	C R	1.0Ω 1/2W J
R1953	QRX01GJ-4R7	MF R	4.7Ω 1W J

CAPACITOR

C1001	NCB31HK-222X	C CAP.	2200pF 50V K
C1002	QETN1HM-106Z	E CAP.	10μF 50V M
C1004	NCB31CK-104X	C CAP.	0.1μF 16V K
C1005	QETN1CM-108Z	E CAP.	1000μF 16V M
C1006	NCB31HK-103X	C CAP.	0.01μF 50V K
C1007	QETN1HM-106Z	E CAP.	10μF 50V M
C1008	NCB31CK-104X	C CAP.	0.1μF 16V K
C1009	NRSA63J-0R0X	MG R	0.0Ω 1/16W J

△ Symbol No.	Part No.	Part Name	Description
CAPACITOR			
C1010	QETN1HM-106Z	E CAP.	10μF 50V M
C1011	NCB31CK-104X	C CAP.	0.1μF 16V K
C1101	NCB31CK-104X	C CAP.	0.1μF 16V K
C1102	QETN1HM-106Z	E CAP.	10μF 50V M
C1103	NCB31CK-104X	C CAP.	0.1μF 16V K
C1104	QETN1CM-107Z	E CAP.	100μF 16V M
C1105	QETN1HM-106Z	E CAP.	10μF 50V M
C1106	NCB31CK-104X	C CAP.	0.1μF 16V K
C1107	NCB31CK-104X	C CAP.	0.1μF 16V K
C1111	NDC31HJ-820X	C CAP.	82pF 50V J
C1112	NDC31HJ-470X	C CAP.	47pF 50V J
C1113	NDC31HJ-470X	C CAP.	47pF 50V J
C1114	NDC31HJ-180X	C CAP.	18pF 50V J
C1115	NCB31HK-472X	C CAP.	4700pF 50V K
C1116	NCB31HK-472X	C CAP.	4700pF 50V K
C1117	NCB31HK-103X	C CAP.	0.01μF 50V K
C1118	NCB31HK-103X	C CAP.	0.01μF 50V K
C1119	NDC31HJ-2R0X	C CAP.	2.0pF 50V J
C1120	NDC31HJ-2R0X	C CAP.	2.0pF 50V J
C1121	NCB31HK-103X	C CAP.	0.01μF 50V K
C1122	NDC31HJ-102X	C CAP.	1000pF 50V J
C1123	NDC31HJ-102X	C CAP.	1000pF 50V J
C1124	QETN1HM-106Z	E CAP.	10μF 50V M
C1125	QETN1HM-106Z	E CAP.	10μF 50V M
C1126	NCB31CK-104X	C CAP.	0.1μF 16V K
C1127	QETN1HM-106Z	E CAP.	10μF 50V M
C1128	NCB31CK-104X	C CAP.	0.1μF 16V K
C1129	NCF31AZ-105X	C CAP.	1μF 10V Z
C1130	QETN1HM-106Z	E CAP.	10μF 50V M
C1131	NCB31HK-103X	C CAP.	0.01μF 50V K
C1132	NCB31HK-103X	C CAP.	0.01μF 50V K
C1301	QETN1CM-107Z	E CAP.	100μF 16V M
C1302	NCB31CK-104X	C CAP.	0.1μF 16V K
C1303	NCB31CK-104X	C CAP.	0.1μF 16V K
C1305	NCB31CK-104X	C CAP.	0.1μF 16V K
C1306	NCB31CK-104X	C CAP.	0.1μF 16V K
C1307	NCB31CK-104X	C CAP.	0.1μF 16V K
C1308	NCB31CK-104X	C CAP.	0.1μF 16V K
C1309	NCB31CK-104X	C CAP.	0.1μF 16V K
C1310	QETN1AM-228Z	E CAP.	2200μF 10V M
C1311	NCB31CK-683X	C CAP.	0.068μF 16V K
C1312	NDC31HJ-221X	C CAP.	220pF 50V J
C1313	NCB31HK-223X	C CAP.	0.022μF 50V K
C1314	NCB31HK-223X	C CAP.	0.022μF 50V K
C1315	NCB31HK-223X	C CAP.	0.022μF 50V K
C1316	NCB31HK-103X	C CAP.	0.01μF 50V K
C1317	NCB31HK-103X	C CAP.	0.01μF 50V K
C1318	NCB31HK-103X	C CAP.	0.01μF 50V K
C1320	QETN0JM-228Z	E CAP.	2200μF 6.3V M
C1321	NCB31HK-223X	C CAP.	0.022μF 50V K
C1322	NCB31HK-223X	C CAP.	0.022μF 50V K
C1323	NCB31HK-223X	C CAP.	0.022μF 50V K
C1324	NDC31HJ-820X	C CAP.	82pF 50V J
C1351	QENC1EM-106Z	BP E CAP.	10μF 25V M
C1401	NCB31CK-104X	C CAP.	0.1μF 16V K
C1402	QETN1CM-107Z	E CAP.	100μF 16V M
C1403	NCB31CK-104X	C CAP.	0.1μF 16V K
C1404	NCB31CK-104X	C CAP.	0.1μF 16V K
C1453	NCB31HK-103X	C CAP.	0.01μF 50V K
C1454	NCB31EK-333X	C CAP.	0.033μF 25V K
C1455	NCB31CK-104X	C CAP.	0.1μF 16V K
C1456	NCB31CK-104X	C CAP.	0.1μF 16V K
C1457	NCB31EK-333X	C CAP.	0.033μF 25V K
C1471	NCB31CK-104X	C CAP.	0.1μF 16V K
C1472	NCB31HK-103X	C CAP.	0.01μF 50V K
C1473	NCB31CK-104X	C CAP.	0.1μF 16V K
C1474	NCB31EK-333X	C CAP.	0.033μF 25V K
C1475	NCB31HK-103X	C CAP.	0.01μF 50V K
C1491	NCB31EK-473X	C CAP.	0.047μF 25V K
C1501	NDC31HJ-150X	C CAP.	15pF 50V J
C1502	NDC31HJ-150X	C CAP.	15pF 50V J
C1551	NCF31CZ-224X	C CAP.	0.22μF 16V Z
C1552	NCF31CZ-224X	C CAP.	0.22μF 16V Z
C1553	QETN1EM-476Z	E CAP.	47μF 25V M
C1554	NCF31CZ-224X	C CAP.	0.22μF 16V Z
C1555	NCF31CZ-224X	C CAP.	0.22μF 16V Z
C1560	QETN1CM-107Z	E CAP.	100μF 16V M
C1561	NDC31HJ-561X	C CAP.	560pF 50V J
C1562	QETN1HM-105Z	E CAP.	1μF 50V M

△ Symbol No.	Part No.	Part Name	Description
CAPACITOR			
C1564	NCB31CK-104X	C CAP.	0.1μF 16V K
C1591	NDC31HJ-561X	C CAP.	560pF 50V J
C1596	NCB31CK-104X	C CAP.	0.1μF 16V K
C1601	QETN1CM-227Z	E CAP.	220μF 16V M
C1602	QETN1CM-227Z	E CAP.	220μF 16V M
C1603	QETN1CM-336Z	E CAP.	33μF 16V M
C1604	QETN1HM-106Z	E CAP.	10μF 50V M
C1605	QETN1HM-107Z	E CAP.	100μF 50V M
C1606	QETN1HM-106Z	E CAP.	10μF 50V M
C1607	NCF21HZ-224X	C CAP.	0.22μF 50V Z
C1608	NCF21HZ-224X	C CAP.	0.22μF 50V Z
C1609	NCF21HZ-224X	C CAP.	0.22μF 50V Z
C1610	NCF21HZ-224X	C CAP.	0.22μF 50V Z
C1611	QETN1HM-107Z	E CAP.	100μF 50V M
C1613	QETN1CM-476Z	E CAP.	47μF 16V M
C1614	NCF31AZ-105X	C CAP.	1μF 10V Z
C1615	QETN1CM-476Z	E CAP.	47μF 16V M
C1616	NCF31AZ-105X	C CAP.	1μF 10V Z
C1617	QETN1HM-105Z	E CAP.	1μF 50V M
C1618	QETN1HM-105Z	E CAP.	1μF 50V M
C1619	QETM1VM-108	E CAP.	1000μF 35V M
C1619	QEHQ1VM-108	E CAP.	1000μF 35V M
C1620	QEHQ1VM-108	E CAP.	1000μF 35V M
C1660	QETN1HM-475Z	E CAP.	4.7μF 50V M
C1661	QETN1HM-475Z	E CAP.	4.7μF 50V M
C1662	NCB31HK-472X	C CAP.	4700pF 50V K
C1663	NCB31EK-104X	C CAP.	0.1μF 25V K
C1664	QETN1HM-475Z	E CAP.	4.7μF 50V M
C1665	NCF21CZ-105X	C CAP.	1μF 16V Z
C1666	NCB31EK-104X	C CAP.	0.1μF 25V K
C1667	QETN1HM-475Z	E CAP.	4.7μF 50V M
C1668	QETN1HM-475Z	E CAP.	4.7μF 50V M
C1669	QETN1HM-107Z	E CAP.	100μF 50V M
C1670	QETN1HM-475Z	E CAP.	4.7μF 50V M
C1671	QETN1HM-475Z	E CAP.	4.7μF 50V M
C1672	QETN1HM-475Z	E CAP.	4.7μF 50V M
C1673	NCB31EK-104X	C CAP.	0.1μF 25V K
C1674	QETN1HM-475Z	E CAP.	4.7μF 50V M
C1675	NCB31EK-104X	C CAP.	0.1μF 25V K
C1676	NCB31HK-472X	C CAP.	4700pF 50V K
C1677	QETN1HM-475Z	E CAP.	4.7μF 50V M
C1678	QETN1HM-475Z	E CAP.	4.7μF 50V M
C1951	QETN1CM-227Z	E CAP.	220μF 16V M
C1952	QETN1CM-477Z	E CAP.	470μF 16V M
C1954	QETN1CM-227Z	E CAP.	220μF 16V M
C1955	QETN1CM-227Z	E CAP.	220μF 16V M

COIL

Symbol No.	Part No.	Part Name	Description
L1001	QQL244K-270Z	COIL	27μH K
L1002	QQL244K-100Z	COIL	10μH K
L1003	QQL244K-100Z	COIL	10μH K
L1004	NQL092K-100X	COIL	10μH
L1101	QRN143J-0R0X	C R	0.0Ω 1/4W J
L1102	QQL244K-4R7Z	COIL	4.7μH K
L1111	QQL244K-220Z	COIL	22μH K
L1112	QQL244K-180Z	COIL	18μH K
L1301	NQL092K-1R5X	COIL	1.5μH
L1302	NQL092K-1R5X	COIL	1.5μH
L1951	IM-BW	BUS WIRE	

DIODE

Symbol No.	Part No.	Part Name	Description
D1311	MA3051/M/-X	ZENER DIODE	
D1312	MA3051/M/-X	ZENER DIODE	
D1313	MA3051/M/-X	ZENER DIODE	
D1314	MA111-X	SI DIODE	
D1315	MA111-X	SI DIODE	
D1316	MA111-X	SI DIODE	
D1317	MA111-X	SI DIODE	
D1318	MA111-X	SI DIODE	
D1471	MA111-X	SI DIODE	
D1472	MA111-X	SI DIODE	
D1473	MA111-X	SI DIODE	
D1474	MA111-X	SI DIODE	
D1475	MA3240/M/-X	ZENER DIODE	
D1521	MA111-X	SI DIODE	
D1591	MA111-X	SI DIODE	

Symbol No.	Part No.	Part Name	Description
DIODE			
D1592	MA3051/M/-X	ZENER DIODE	
D1593	MA111-X	SI DIODE	
D1601	MA111-X	SI DIODE	
D1602	MA111-X	SI DIODE	
D1603	MA3330/L/-X	ZENER DIODE	
D1604	MA3330/L/-X	ZENER DIODE	
D1605	MA111-X	SI DIODE	
D1606	MA111-X	SI DIODE	
D1607	MA111-X	SI DIODE	
D1608	MA3150/M/-X	ZENER DIODE	
D1609	MA3150/M/-X	ZENER DIODE	
D1771	MA3056/M/-X	ZENER DIODE	
D1772	MA3056/M/-X	ZENER DIODE	
D1773	MA3056/M/-X	ZENER DIODE	
D1774	MA3056/M/-X	ZENER DIODE	
D1951	1SR35-400A-T5	SI DIODE	
D1981	MA111-X	SI DIODE	
D1982	MA111-X	SI DIODE	
TRANSISTOR			
Q1101	2SC2412K/QR/-X	SI TRANSISTOR	
Q1102	2SC2412K/QR/-X	SI TRANSISTOR	
Q1301	2SA1037AK/QR/-X	SI TRANSISTOR	
Q1471	2SC2412K/QR/-X	SI TRANSISTOR	
Q1472	2SC2412K/QR/-X	SI TRANSISTOR	
Q1561	2SC2412K/QR/-X	SI TRANSISTOR	
Q1562	2SA1037AK/QR/-X	SI TRANSISTOR	
Q1591	2SA1037AK/QR/-X	SI TRANSISTOR	
Q1592	2SC2412K/QR/-X	SI TRANSISTOR	
Q1601	2SA1037AK/QR/-X	SI TRANSISTOR	
Q1602	2SA1037AK/QR/-X	SI TRANSISTOR	
Q1603	DTC323TK-X	DIGI TRANSISTOR	
Q1604	DTC323TK-X	DIGI TRANSISTOR	
Q1605	2SD601A/QR/-X	SI TRANSISTOR	
Q1606	2SA1037AK/QR/-X	SI TRANSISTOR	
Q1608	2SD601A/QR/-X	SI TRANSISTOR	
IC			
IC1101	MSP3417G-X	IC	
IC1301	SDA9380	IC	
IC1402	BA10324AF-XE	IC	
IC1471	UPC358G2-XE	IC (MONOLITHIC)	
IC1551	LA6515	IC	
IC1601	AN5277	IC	
IC1602	BA4558F-X	IC	
IC1661	HCEX0127	IC	
IC1951	BA17809T	IC	
IC1952	BA17808T	IC	
OTHERS			
CN1001	QGB1505J1-50	B TO B CONNE	
CN1002	QGF1220C2-25	CONNECTOR	
CN1003	QGB1505J1-50	B TO B CONNE	
CN1004	QGB1506L1-16	B TO B CONNE	
CN1005	QGB1506L1-16	B TO B CONNE	
CN1006	QGB1506L1-16	B TO B CONNE	
CN1007	QGB1505J1-50	B TO B CONNE	
CN1013	QGA2501C1-10	W TO B CONNE	
K1001	NQR0389-003X	FERRITE BEADS	
K1101	NQR0389-003X	FERRITE BEADS	
K1102	NQR0389-003X	FERRITE BEADS	
K1301	NQR0413-003X	FERRITE BEADS	
LC1102	NQR0431-001X	EMI FILTER	
LC1301	NQR0431-001X	EMI FILTER	
LC1302	NQR0431-001X	EMI FILTER	
LC1303	NQR0431-001X	EMI FILTER	
TU1001	QAU0197-002	TUNER	
X1101	CE42546-001Z	CRYSTAL	
X1501	QAX0549-001Z	CRYSTAL	
MD1001		BLK PB ASSY	(SMF-0V502A) As follows

■ BLK P.W. BOARD ASS'Y (SMF-0V502A)

This P.W. Board Ass'y is included in the above main P.W. Board Ass'y.

Symbol No.	Part No.	Part Name	Description
RESISTOR			
R0001	NRSA63J-104X	MG R	100kΩ 1/16W J
R0002	NRSA63J-104X	MG R	100kΩ 1/16W J
R0003	NRSA63J-392X	MG R	3.9kΩ 1/16W J
R0004	NRSA63J-332X	MG R	3.3kΩ 1/16W J
R0005	NRSA63J-103X	MG R	10kΩ 1/16W J
R0006	NRSA63J-103X	MG R	10kΩ 1/16W J
R0007	NRSA63J-102X	MG R	1kΩ 1/16W J
R0008	NRSA63J-102X	MG R	1kΩ 1/16W J
R0009	NRSA63J-102X	MG R	1kΩ 1/16W J
CAPACITOR			
C0001	QETN1CM-107Z	E CAP.	100μF 16V M
C0002	NCB31HK-103X	C CAP.	0.01μF 50V K
C0003	NCB31CK-104X	C CAP.	0.1μF 16V K
DIODE			
D0001	NRSA63J-0R0X	MG R	0.0Ω 1/16W J
TRANSISTOR			
Q0001	2SA1037AK/QR/-X	TRANSISTOR	
Q0002	2SC2412K/QR/-X	TRANSISTOR	
Q0003	2SC2412K/QR/-X	TRANSISTOR	
Q0004	2SC2412K/QR/-X	TRANSISTOR	
IC			
IC0001	UPC358G2-XE	IC	
OTHERS			
CN0016	CH41163-005R	CONNECTOR	

POWER & DEF. P.W. BOARD ASS'Y (SMF-2701A)

Symbol No.	Part No.	Part Name	Description
RESISTOR			
R2401	QRE141J-562Y	C R	5.6kΩ 1/4W J
R2402	QRE141J-562Y	C R	5.6kΩ 1/4W J
R2403	QRE141J-222Y	C R	2.2kΩ 1/4W J
R2404	QRT01EJ-1R0X	MF R	1.0Ω 1W J
R2405	QRL02EJ-561X	OM R	560Ω 2W J
R2406	QRE141J-222Y	C R	2.2kΩ 1/4W J
R2407	QRX01GJ-1R5	MF R	1.5Ω 1W J
R2408	QRX01GJ-1R8	MF R	1.8Ω 1W J
R2409	QRE141J-823Y	C R	82kΩ 1/4W J
R2410	QRE141J-103Y	C R	10kΩ 1/4W J
R2421	QRE141J-103Y	C R	10kΩ 1/4W J
R2422	QRE141J-684Y	C R	680kΩ 1/4W J
R2461	QRG029J-820	OM R	82Ω 2W J
R2463	QRE141J-562Y	C R	5.6kΩ 1/4W J
R2464	QRT01EJ-3R3X	MF R	3.3Ω 1W J
R2468	QRE141J-102Y	C R	1kΩ 1/4W J
R2469	QRE141J-272Y	C R	2.7kΩ 1/4W J
R2471	QRE141J-391Y	C R	390Ω 1/4W J
R2472	QRA14CF-1002Y	MF R	10kΩ 1/4W F
R2473	QRE141J-473Y	C R	47kΩ 1/4W J
R2474	QRE141J-103Y	C R	10kΩ 1/4W J
R2475	QRE141J-102Y	C R	1kΩ 1/4W J
R2476	QRE141J-102Y	C R	1kΩ 1/4W J
R2477	QRE141J-563Y	C R	56kΩ 1/4W J
R2478	QRE141J-333Y	C R	33kΩ 1/4W J
R2501	QRE141J-471Y	C R	470Ω 1/4W J
R2502	QRE141J-123Y	C R	12kΩ 1/4W J
R2503	QRE121J-152Y	C R	1.5kΩ 1/2W J
R2504	QRL03EJ-332X	OM R	3.3kΩ 3W J
R2505	QRL03EJ-332X	OM R	3.3kΩ 3W J
R2506	QRE121J-5R6Y	C R	5.6Ω 1/2W J
R2521	QRE121J-471Y	C R	470Ω 1/2W J
R2522	QRE141J-223Y	C R	22kΩ 1/4W J
R2523	QRE141J-103Y	C R	10kΩ 1/4W J
R2524	QRC121K-152Z	COMP. R	1.5kΩ 1/2W K
R2541	QRE141J-182Y	C R	1.8kΩ 1/4W J
R2542	QRE141J-222Y	C R	2.2kΩ 1/4W J
R2543	QRE121J-272Y	C R	2.7kΩ 1/2W J
△ R2551	QRZ9022-R47	F R	0.47 Ω 1W K
△ R2552	QRZ9022-R47	F R	0.47 Ω 1W K
△ R2555	QRZ9022-R68	F R	0.68 Ω 1W K
R2561	QRL01EJ-220X	OM R	22Ω 1W J
R2562	QRE121J-123Y	C R	12kΩ 1/2W J
R2563	QRZ0056-103Z	COMP R	10kΩ 1/2W K
R2564	QRE121J-184Y	C R	180kΩ 1/2W J
R2565	QRE121J-184Y	C R	180kΩ 1/2W J
R2566	QRE121J-184Y	C R	180kΩ 1/2W J
R2567	QRE121J-184Y	C R	180kΩ 1/2W J
R2568	QRE121J-184Y	C R	180kΩ 1/2W J
R2569	QRE141J-183Y	C R	18kΩ 1/4W J
R2570	QRE141J-103Y	C R	10kΩ 1/4W J
R2571	QRE141J-822Y	C R	8.2kΩ 1/4W J
R2572	QRE141J-183Y	C R	18kΩ 1/4W J
R2573	QRE141J-183Y	C R	18kΩ 1/4W J
R2574	QRE141J-392Y	C R	3.9kΩ 1/4W J
R2575	QRE141J-152Y	C R	1.5kΩ 1/4W J
R2581	QRF154K-4R7	UNF R	4.7Ω 15W K
R2582	QRE141J-681Y	C R	680Ω 1/4W J
R2583	QRE121J-682Y	C R	6.8kΩ 1/2W J
R2584	QRE141J-183Y	C R	18kΩ 1/4W J
R2585	QRE141J-222Y	C R	2.2kΩ 1/4W J
R2902	QRF054K-3R3	UNF R	3.3Ω 5W K
R2903	QRF154K-1R8	UNF R	1.8Ω 15W K
R2904	QRL039J-683	OM R	68kΩ 3W J
R2905	QRE121J-394Y	C R	390kΩ 1/2W J
R2906	QRE121J-394Y	C R	390kΩ 1/2W J
R2907	QRE141J-273Y	C R	27kΩ 1/4W J
R2908	QRL039J-823	OM R	82kΩ 3W J
R2909	QRL039J-823	OM R	82kΩ 3W J
△ R2910	QRZ9017-4R7	F R	4.7 Ω 1/4W J
R2911	QRE121J-122Y	C R	1.2kΩ 1/2W J
R2912	QRE141J-152Y	C R	1.5kΩ 1/4W J
R2913	QRT02EJ-R27X	MF R	0.27Ω 2W J
R2914	QRMO59J-R10	MP R	0.10Ω 5W J
R2915	QRE121J-681Y	C R	680Ω 1/2W J
R2916	QRE121J-332Y	C R	3.3kΩ 1/2W J
△ R2932	QRZ9017-330	F R	33 Ω 1/4W J
R2934	QRE121J-474Y	C R	470kΩ 1/2W J
R2935	QRE141J-332Y	C R	3.3kΩ 1/4W J

Symbol No.	Part No.	Part Name	Description
RESISTOR			
R2936	QRX01GJ-4R7	MF R	4.7Ω 1W J
R2937	QRE121J-681Y	C R	680Ω 1/2W J
R2941	QRE121J-330Y	C R	33Ω 1/2W J
R2942	QRE141J-682Y	C R	6.8kΩ 1/4W J
R2943	QRE141J-473Y	C R	47kΩ 1/4W J
R2944	QRE141J-103Y	C R	10kΩ 1/4W J
R2945	QRE141J-563Y	C R	56kΩ 1/4W J
R2946	QRE141J-332Y	C R	3.3kΩ 1/4W J
R2949	QRE141J-101Y	C R	100Ω 1/4W J
R2950	QRE141J-221Y	C R	220Ω 1/4W J
R2951	QRE121J-102Y	C R	1kΩ 1/2W J
R2952	QRL03EJ-223X	OM R	22kΩ 3W J
R2953	QRE141J-474Y	C R	470kΩ 1/4W J
R2954	QRE141J-103Y	C R	10kΩ 1/4W J
R2955	QRT029J-1R0	MF R	1.0Ω 2W J
R2957	QRT039J-3R9	MF R	3.9Ω 3W J
R2981	QRE141J-153Y	C R	15kΩ 1/4W J
R2982	QRE141J-102Y	C R	1kΩ 1/4W J
△ R2991	QRZ0057-825	C R	8.2MΩ 1W J

CAPACITOR

C2403	QFLC2AJ-104Z	M CAP.	0.1μF 100V J
C2404	QCZ0120-104Z	C CAP.	0.1μF 25V Z
C2405	QDC31HJ-820Z	C CAP.	82pF 50V J
C2406	QETM1VM-108	E CAP.	1000μF 35V M
C2408	QETN1VM-107Z	E CAP.	100μF 35V M
C2409	QFV71HJ-474Z	MF CAP.	0.47μF 50V J
C2410	QFV71HJ-474Z	MF CAP.	0.47μF 50V J
C2411	QFLC2AJ-104Z	M CAP.	0.1μF 100V J
C2414	QCB31HK-682Z	C CAP.	6800pF 50V K
C2415	QETN1VM-107Z	E CAP.	100μF 35V M
C2421	QETN1HM-105Z	E CAP.	1μF 50V M
C2461	QEZ0414-226	E CAP.	22μF 50V M
C2462	QFM72DJ-152Z	M CAP.	1500pF 200V J
C2463	QFM72DJ-122Z	M CAP.	1200pF 200V J
C2464	QCZ0120-104Z	C CAP.	0.1μF 25V Z
C2465	QETN1HM-106Z	E CAP.	10μF 50V M
C2466	QFP31HJ-272Z	PP CAP.	2700pF 50V J
C2467	QFLC1HJ-102Z	M CAP.	1000pF 50V J
C2468	QETN1EM-476Z	E CAP.	47μF 25V M
C2470	QCS31HJ-470Z	C CAP.	47pF 50V J
C2471	QFLC1HJ-103Z	M CAP.	0.01μF 50V J
C2501	QCB32HK-331Z	C CAP.	330pF 500V K
C2502	QFM72DK-103	M CAP.	0.01μF 200V K
C2503	QFV71HJ-224Z	MF CAP.	0.22μF 50V J
△ C2520	QFZ0200-112	MPP CAP.	1100pF1.5kVH±3%
△ C2521	QFZ0200-112	MPP CAP.	1100pF1.5kVH±3%
△ C2522	QFZ0200-113	MPP CAP.	0.01μF1.5kVH±3%
C2523	QFM72DK-183	M CAP.	0.018μF 200V K
△ C2524	QFP32JJ-223	PP CAP.	0.022μF 630V J
△ C2526	QFZ0197-683	MPP CAP.	0.068μF 250V J
△ C2527	QFZ0197-154	MPP CAP.	0.15μF 250V J
△ C2528	QFZ0197-683	MPP CAP.	0.068μF 250V J
△ C2529	QFZ0197-154	MPP CAP.	0.15μF 250V J
C2530	QCB32HK-561Z	C CAP.	560pF 500V K
△ C2531	QFZ0197-534	MPP CAP.	0.53μF 250V J
C2532	QETM2CM-227	E CAP.	220μF 160V M
C2541	QENC1HM-105Z	E CAP.	1μF 50V M
C2551	QCB32HK-152Z	C CAP.	1500pF 500V K
C2552	QETN1CM-108Z	E CAP.	1000μF 16V M
C2553	QCB32HK-152Z	C CAP.	1500pF 500V K
C2554	QETN1CM-108Z	E CAP.	1000μF 16V M
C2555	QCB32HK-102Z	C CAP.	1000pF 500V K
C2556	QETM2EM-106	E CAP.	10μF 250V M
C2558	QETN1CM-477Z	E CAP.	470μF 16V M
C2559	QEHR1CM-227Z	E CAP.	220μF 16V M
C2561	QFLC2AJ-153Z	M CAP.	0.015μF 100V J
△ C2563	QFZ0122-682	MPP CAP.	6800pF1.8kVH±3%
C2564	QCZ0122-471	C CAP.	470pF 2kV K
C2565	QCZ0122-471	C CAP.	470pF 2kV K
△ C2566	QFZ0200-512	MPP CAP.	5100pF1.5kVH±3%
C2567	QFLC1HJ-563Z	M CAP.	0.056μF 50V J
C2568	QETN1VM-476Z	E CAP.	47μF 35V M
C2581	QETN1CM-107Z	E CAP.	100μF 16V M
C2582	QETN1EM-476Z	E CAP.	47μF 25V M
△ C2902	QFZ9075-104	MPP CAP.	0.1μFAC275V M
△ C2903	QFZ9075-473	MPP CAP.	0.047μFAC275V M
△ C2904	QCZ9054-472	C CAP.	4700pFAC250V Z

△ Symbol No.	Part No.	Part Name	Description
CAPACITOR			
△ C2905	QCZ9054-472	C CAP.	4700pFAC250V Z
△ C2906	QCZ9054-472	C CAP.	4700pFAC250V Z
C2907	QEZO371-397	E CAP.	390μF 400V M
C2908	QCB32HK-103	C CAP.	0.01μF 500V K
C2909	QCZ0340-391	C CAP.	390pF 2kV K
C2910	QETN1HM-476Z	E CAP.	47μF 50V M
C2911	QCB31HK-272Z	C CAP.	2700pF 50V K
C2912	QCZ0340-561	C CAP.	560pF 2kV K
C2914	QCB31HK-471Z	C CAP.	470pF 50V K
C2915	QFLC1HJ-332Z	M CAP.	3300pF 50V J
C2916	QCB32HK-152Z	C CAP.	1500pF 500V K
C2931	QCZ9054-472	C CAP.	4700pFAC250V Z
C2932	QCZ9054-472	C CAP.	4700pFAC250V Z
C2933	QCZ9054-472	C CAP.	4700pFAC250V Z
C2934	QETM2GM-226	E CAP.	22μF 400V M
C2936	QCZ0340-151	C CAP.	150pF 2kV K
C2937	QETN1HM-475Z	E CAP.	4.7μF 50V M
C2939	QFLC1HJ-103Z	M CAP.	0.01μF 50V J
C2940	QCB31HK-471Z	C CAP.	470pF 50V K
C2941	QETN1AM-108Z	E CAP.	1000μF 10V M
C2943	QETN1CM-107Z	E CAP.	100μF 16V M
C2951	QEZO203-227	E CAP.	220μF 160V M
C2952	QTHM1EM-228	E CAP.	2200μF 25V M
C2955	QETM1VM-228	E CAP.	2200μF 35V M
C2956	QETM1EM-338	E CAP.	3300μF 25V M
C2959	QFV71HJ-684Z	MF CAP.	0.68μF 50V J
C2960	QCZ0131-821	C CAP.	820pF 2kV K
C2972	QETN1CM-477Z	E CAP.	470μF 16V M
C2974	QETN1AM-227Z	E CAP.	220μF 10V M
C2976	QETN1CM-477Z	E CAP.	470μF 16V M
C2978	QETN1AM-227Z	E CAP.	220μF 10V M
△ C2993	QCZ9079-471	C CAP.	470pFAC250V K
△ C2995	QCZ9079-102	C CAP.	1000pFAC250V M

TRANSF			
T2501	QQR0882-001	DRIVE TRANSF	
△ T2551	QQH0099-001	FB TRANSF	
T2561	QQR1096-001	DEF TRANSF	
△ T2901	HCEX0147	TRANSFORMER	
△ T2931	HCEX0146	TRANSFORMER	

COIL			
L2461	QQR1195-001	CHOKE COIL	
L2462	QQLZ028-272	INDUCTOR	
L2521	QQLZ031-180	INDUCTOR	
L2522	QQR1196-002	LINEARITY COIL	
L2552	QQL26AK-220Z	COIL	22μH K
L2561	QQLZ028-272	INDUCTOR	
L2951	QQLZ026-460	INDUCTOR	
L2952	IM-BW	BUS WIRE	
L2954	IM-BW	BUS WIRE	
L2955	IM-BW	BUS WIRE	
L2959	QQL26AK-220Z	COIL	22μH K
L2960	QQL26AK-220Z	COIL	22μH K

DIODE			
D2402	1SR35-400A-T2	SI DIODE	
D2403	1SR35-400A-T2	SI DIODE	
D2421	1SS133-T2	SI DIODE	
D2461	EU2-T3	SI DIODE	
D2462	1SS133-T2	SI DIODE	
D2463	1SS133-T2	SI DIODE	
D2501	1SS81-T5	SI DIODE	
D2521	V11CA-C1	SI DIODE	
D2522	FMV-3FU-F1	SI DIODE	
D2523	MTZJ22B-T2	ZENER DIODE	
D2541	EU2-T3	SI DIODE	
D2542	MTZJ3.9B-T2	ZENER DIODE	
D2551	EU2-T3	SI DIODE	
D2552	EU2-T3	SI DIODE	
D2553	RH1S-T3	SI DIODE	
D2554	RH1S-T3	SI DIODE	
D2561	ES1F-LFG2	SI DIODE	
D2562	ES1F-LFG2	SI DIODE	
D2582	MTZJ7.5B-T2	ZENER DIODE	
△ D2901	D35B60	BRIDGE DIODE	
D2902	RG1C-LFA1	SI DIODE	

△ Symbol No.	Part No.	Part Name	Description
DIODE			
D2903	MTZJ6.8C-T2	ZENER DIODE	
D2904	AU01Z-T2	FR DIODE	
D2905	AU01Z-T2	FR DIODE	
D2906	MTZJ27B-T2	ZENER DIODE	
D2907	1SS133-T2	SI DIODE	
D2908	1SS133-T2	SI DIODE	
D2909	IM-BW	BUS WIRE	
D2910	MTZJ15B-T2	ZENER DIODE	
D2911	1SS133-T2	SI DIODE	
D2912	MTZJ27B-T2	ZENER DIODE	
D2931	S1WB/A/60-4101	BRIDGE DIODE	
D2933	AU01Z-T2	FR DIODE	
D2934	MTZJ27B-T2	ZENER DIODE	
D2941	RGP10J-5025-T3	SI DIODE	
D2943	MTZJ7.5B-T2	ZENER DIODE	
D2944	MTZJ3.9B-T2	ZENER DIODE	
D2945	1SS133-T2	SI DIODE	
D2947	1SS133-T2	SI DIODE	
D2948	1SS133-T2	SI DIODE	
D2951	RU4B-F1	SI DIODE	
D2952	FMX-G12S	SI DIODE	
D2953	RU4B-F1	SI DIODE	
D2955	FMX-G12S	SI DIODE	
D2956	FMX-G12S	SI DIODE	
D2957	IM-BW	BUS WIRE	
D2958	MTZJ33B-T2	ZENER DIODE	
D2961	1SR35-400A-T2	SI DIODE	
D2981	1SS133-T2	SI DIODE	
D2984	1SS133-T2	SI DIODE	
D2985	1SS133-T2	SI DIODE	

TRANSISTOR			
Q2421	DTC124ESA-T	DIGI TRANSISTOR	
Q2422	2SC1740S/QR/-T	SI TRANSISTOR	
Q2461	2SK2459N-F54	F.E.T.	
Q2462	2SC1740S/QR/-T	SI TRANSISTOR	
Q2463	2SC1740S/QR/-T	SI TRANSISTOR	
Q2464	2SA933AS/QR/-T	SI TRANSISTOR	
Q2501	BSN304-T	F.E.T.	
△ Q2521	2SC5905-RL	POW TRANSISTOR	H. OUT
Q2561	2SC1740S/QR/-T	SI TRANSISTOR	
Q2562	2SC1740S/QR/-T	SI TRANSISTOR	
Q2563	2SC4686A	POW TRANSISTOR	
Q2581	2SA1208/ST/Z1-T	SI TRANSISTOR	
Q2582	DTC144ESA-T	DIGI TRANSISTOR	
Q2941	2SC1740S/QR/-T	SI TRANSISTOR	
Q2942	2SC1740S/QR/-T	SI TRANSISTOR	
Q2943	2SC1740S/QR/-T	SI TRANSISTOR	

IC		
IC2401	LA7876NZ	IC
IC2461	BA10393	IC
IC2551	BA12T	IC
IC2901	STR-F6658B/F7	IC
IC2931	HCEX0145	IC
IC2951	SE140N	IC
IC2954	BA17805T	IC
IC2955	BA033T	IC

OTHERS			
CN2004	QGB1506M1-16	B TO B CONNE	
CN2005	QGB1506M1-16	B TO B CONNE	
CN2006	QGB1506M1-16	B TO B CONNE	
CN2014	QGA2501C5-06Z	W TO B CONNE	
△ CP2931	QMFZ043-2R0Z-J1	FUSE	2.0A
△ CP2941	ICP-N25-Y	IC PROTECTOR	
△ CP2955	QMFZ034-4R0Z-J1	FUSE	4.0A
△ CP2956	QMFZ034-4R0Z-J1	FUSE	4.0A
K2401	QQR0621-002Z	FERRITE BEADS	
K2522	CE41832-001	LEAD CORE	
K2523	CE41832-001	LEAD CORE	
K2524	CE41832-001	LEAD CORE	
K2901	QQR0679-001	FERRITE BEADS	
K2952	QQR0621-002Z	FERRITE BEADS	
△ LF2901	QQR1253-001	LINE FILTER	
△ PC2901	PC123F2	IC(PHOTO COUPLER)	
△ PC2931	PC123F2	IC(PHOTO COUPLER)	
△ RY2901	QSK0061-001	RELAY	
△ RY2931	QSK0090-001	RELAY	
△ TH2901	QAD0134-4RS	P THERMISTOR	

■ CRT SOCKET P.W. BOARD ASS'Y (SMF-3701A)

△ Symbol No. Part No. Part Name Description

RESISTOR

R3101	NRSA63J-123X	MG R	12kΩ 1/16W J
R3102	NRSA63J-681X	MG R	680Ω 1/16W J
R3103	NRSA63J-101X	MG R	100Ω 1/16W J
R3104	NRSA63J-472X	MG R	4.7kΩ 1/16W J
R3105	NRSA63J-102X	MG R	1kΩ 1/16W J
R3106	NRSA63J-221X	MG R	220Ω 1/16W J
R3107	NRSA63J-561X	MG R	560Ω 1/16W J
R3108	QRE121J-100Y	C R	10Ω 1/2W J
R3109	NRSA63J-153X	MG R	15kΩ 1/16W J
R3110	NRSA63J-222X	MG R	2.2kΩ 1/16W J
R3111	NRSA63J-182X	MG R	1.8kΩ 1/16W J
R3112	NRSA63J-272X	MG R	2.7kΩ 1/16W J
R3113	NRSA63J-561X	MG R	560Ω 1/16W J
R3114	NRSA63J-152X	MG R	1.5kΩ 1/16W J
R3115	NRSA63J-820X	MG R	82Ω 1/16W J
R3117	NRSA63J-221X	MG R	220Ω 1/16W J
R3122	NRSA63J-122X	MG R	1.2kΩ 1/16W J
R3123	QRE121J-563Y	C R	56kΩ 1/2W J
R3124	NRSA63J-470X	MG R	47Ω 1/16W J
R3125	QRE121J-563Y	C R	56kΩ 1/2W J
R3126	NRSA63J-470X	MG R	47Ω 1/16W J
R3127	NRSA63J-122X	MG R	1.2kΩ 1/16W J
R3128	NRSA63J-390X	MG R	39Ω 1/16W J
R3129	QRE121J-2R7Y	C R	2.7Ω 1/2W J
R3130	QRE121J-2R7Y	C R	2.7Ω 1/2W J
R3131	NRSA63J-390X	MG R	39Ω 1/16W J
R3132	NRSA63J-121X	MG R	120Ω 1/16W J
R3133	QRL029J-681	OM R	680Ω 2W J
△ R3134	QRZ9021-561	F R	560 Ω 1W J
R3204	NRSA63J-272X	MG R	2.7kΩ 1/16W J
R3205	NRSA63J-272X	MG R	2.7kΩ 1/16W J
R3206	NRSA63J-272X	MG R	2.7kΩ 1/16W J
R3211	NRSA63J-154X	MG R	150kΩ 1/16W J
R3223	NRSA63J-272X	MG R	2.7kΩ 1/16W J
R3224	NRSA63J-272X	MG R	2.7kΩ 1/16W J
R3225	NRSA63J-272X	MG R	2.7kΩ 1/16W J
R3227	NRSA63J-103X	MG R	10kΩ 1/16W J
R3228	NRSA63J-272X	MG R	2.7kΩ 1/16W J
R3229	QRL029J-104-M	OM R	100kΩ 2W J
R3230	QRL029J-104-M	OM R	100kΩ 2W J
R3231	QRL029J-104-M	OM R	100kΩ 2W J
R3232	NRSA63J-332X	MG R	3.3kΩ 1/16W J
R3233	NRSA63J-332X	MG R	3.3kΩ 1/16W J
R3234	NRSA63J-332X	MG R	3.3kΩ 1/16W J
R3235	QRC121K-152Z	COMP. R	1.5kΩ 1/2W K
R3236	QRC121K-152Z	COMP. R	1.5kΩ 1/2W K
R3237	QRC121K-152Z	COMP. R	1.5kΩ 1/2W K
△ R3239	QRZ0107-474Z	C R	470kΩ 1/2W K
R3241	QRZ0107-105Z	C R	1.0MΩ 1/2W K
R3242	NRSA63J-103X	MG R	10kΩ 1/16W J
R3244	NRSA63J-102X	MG R	1kΩ 1/16W J
R3245	NRSA63J-562X	MG R	5.6kΩ 1/16W J
R3246	NRSA63J-562X	MG R	5.6kΩ 1/16W J
R3247	NRSA63J-562X	MG R	5.6kΩ 1/16W J
R3251	QVP0038-206	V R	20MΩ
R3301	QRE121J-474Y	C R	470kΩ 1/2W J
R3302	QRE121J-474Y	C R	470kΩ 1/2W J
R3303	NRSA63J-223X	MG R	22kΩ 1/16W J
R3304	NRSA63J-223X	MG R	22kΩ 1/16W J
R3305	NRSA63J-562X	MG R	5.6kΩ 1/16W J
R3306	NRSA63J-392X	MG R	3.9kΩ 1/16W J
R3310	NRSA63J-0R0X	MG R	0.0Ω 1/16W J

CAPACITOR

C3102	NDC31HJ-6R0X	C CAP.	6.0pF 50V J
C3103	NDC31HJ-151X	C CAP.	150pF 50V J
C3104	QCB31HK-103Z	C CAP.	0.01μF 50V K
C3106	QETN1EM-335Z	E CAP.	3.3μF 50V M
C3107	QETN1CM-107Z	E CAP.	100μF 16V M
C3110	QETN2CM-106Z	E CAP.	10μF 160V M
C3111	QCB32HK-472Z	C CAP.	4700pF 500V K
C3113	QETN2CM-106Z	E CAP.	10μF 160V M
C3114	QCB32HK-472Z	C CAP.	4700pF 500V K
C3116	QETN1AM-107Z	E CAP.	100μF 10V M
C3117	QETN1AM-107Z	E CAP.	100μF 10V M
C3118	QETN1AM-337Z	E CAP.	330μF 10V M
C3120	NDC31HJ-821X	C CAP.	820pF 50V J
C3121	NDC31HJ-221X	C CAP.	220pF 50V J

△ Symbol No. Part No. Part Name Description

CAPACITOR

C3201	NDC31HJ-100X	C CAP.	10pF 50V J
C3202	NDC31HJ-100X	C CAP.	10pF 50V J
C3203	NDC31HJ-100X	C CAP.	10pF 50V J
C3204	NCF31CZ-104X	C CAP.	0.1μF 16V Z
C3205	NCF31CZ-104X	C CAP.	0.1μF 16V Z
C3206	NCF31CZ-104X	C CAP.	0.1μF 16V Z
C3207	QETN1EM-476Z	E CAP.	47μF 25V M
C3208	QETN1EM-476Z	E CAP.	47μF 25V M
C3209	QETN1EM-476Z	E CAP.	47μF 25V M
C3210	QFK62EK-104Z	MM CAP.	0.1μF 250V K
C3211	QFK62EK-104Z	MM CAP.	0.1μF 250V K
C3212	QFK62EK-104Z	MM CAP.	0.1μF 250V K
C3213	NDC31HJ-181X	C CAP.	180pF 50V J
C3214	NDC31HJ-181X	C CAP.	180pF 50V J
C3215	NDC31HJ-181X	C CAP.	180pF 50V J
C3216	QETN1CM-107Z	E CAP.	100μF 16V M
C3218	QETM2EM-336	E CAP.	33μF 250V M
C3219	QFZ0097-223	MM CAP.	0.022μF 1250V K
C3221	QETM2EM-106	E CAP.	10μF 250V M
C3222	NDC31HJ-181X	C CAP.	180pF 50V J
C3302	QETN1AM-227Z	E CAP.	220μF 10V M

COIL

L3101	QQL244K-5R6Z	COIL	5.6μH K
L3201	QQL244K-4R7Z	COIL	4.7μH K
L3202	QQL244K-4R7Z	COIL	4.7μH K
L3203	QQL244K-4R7Z	COIL	4.7μH K
L3204	QQL26AJ-102Z	COIL	1mH J

DIODE

D3101	MA111-X	SI DIODE	
D3102	MA111-X	SI DIODE	
D3103	RH15-T3	SI DIODE	
D3104	RH15-T3	SI DIODE	
D3105	NRSA63J-0R0X	MG R	0.0Ω 1/16W J
D3204	EU01N-T2	SI DIODE	
D3205	EU01N-T2	SI DIODE	
D3206	EU01N-T2	SI DIODE	
D3207	IM-BW	BUS WIRE	
D3208	1SR124-400A-T2	SI DIODE	
D3209	1SR124-400A-T2	SI DIODE	
D3210	1SR124-400A-T2	SI DIODE	
D3211	MA3062/M/-X	ZENER DIODE	
D3212	MA3130/H/-X	ZENER DIODE	
D3213	MA3130/H/-X	ZENER DIODE	
D3214	MA3130/H/-X	ZENER DIODE	
D3301	MA111-X	SI DIODE	
D3303	MA111-X	SI DIODE	

TRANSISTOR

Q3101	2SC2412K/QR/-X	SI TRANSISTOR	
Q3102	2SA1037AK/QR/-X	SI TRANSISTOR	
Q3103	2SC1906-T	SI TRANSISTOR	
Q3104	2SC2412K/QR/-X	SI TRANSISTOR	
Q3105	2SC1740S/QR/-T	SI TRANSISTOR	
Q3108	2SA1837	POWER TRANSISTOR	
Q3109	2SC4793	POWER TRANSISTOR	
Q3301	2SA1037AK/QR/-X	SI TRANSISTOR	

IC

IC3201	TDA6111Q	I C	
IC3202	TDA6111Q	I C	
IC3203	TDA6111Q	I C	

OTHERS

CN3013	CHGY0146-0A-G	CONNECTOR ASSY	
CN3014	QJK002-063631	CONNECTOR ASSY	
K3101	CE41492-001Z	CHOKE COIL	
K3103	CE41492-001Z	CHOKE COIL	
K3104	CE41492-001Z	CHOKE COIL	
K3105	QQR0621-002Z	FERRITE BEADS	
SG3201	QAF0056-501Z	SURGE ABSORBER	
SG3202	QAF0056-501Z	SURGE ABSORBER	
SG3203	QAF0056-501Z	SURGE ABSORBER	
△ SK3001	QNZ0464-001	CRT SOCKET	

■ FRONT CONTROL P.W. BOARD ASS'Y (SMF-8701A)

△ Symbol No.	Part No.	Part Name	Description
RESISTOR			
R8001	QRE121J-101Y	C R	100Ω 1/2W J
R8002	QRE121J-101Y	C R	100Ω 1/2W J
R8003	NRSA63J-102X	MG R	1kΩ 1/16W J
R8004	NRSA63J-222X	MG R	2.2kΩ 1/16W J
R8005	NRSA63J-221X	MG R	220Ω 1/16W J
R8006	NRSA63J-182X	MG R	1.8kΩ 1/16W J
R8007	NRSA63J-103X	MG R	10kΩ 1/16W J
R8008	NRSA63J-102X	MG R	1kΩ 1/16W J
R8010	NRSA63J-103X	MG R	10kΩ 1/16W J
R8012	NRSA63J-103X	MG R	10kΩ 1/16W J
R8013	NRSA63J-103X	MG R	10kΩ 1/16W J
R8020	NRSA63J-822X	MG R	8.2kΩ 1/16W J
R8021	NRSA63J-102X	MG R	1kΩ 1/16W J
R8022	NRSA63J-102X	MG R	1kΩ 1/16W J
R8035	QRE121J-151Y	C R	150Ω 1/2W J
R8036	NRSA63J-561X	MG R	560Ω 1/16W J
R8038	NRSA63J-182X	MG R	1.8kΩ 1/16W J
R8039	NRSA63J-331X	MG R	330Ω 1/16W J

CAPACITOR

C8001	NCB31HK-103X	C CAP.	0.01μF 50V K
C8002	NCB31HK-103X	C CAP.	0.01μF 50V K
C8003	QETN1HM-106Z	E CAP.	10μF 50V M
C8004	NCB31CK-104X	C CAP.	0.1μF 16V K
C8010	NCB31HK-472X	C CAP.	4700pF 50V K
C8011	NCB31HK-472X	C CAP.	4700pF 50V K
C8019	QETN1CM-107Z	E CAP.	100μF 16V M
C8022	QETN1EM-476Z	E CAP.	47μF 25V M
△ C8901	QFZ9040-474	MF CAP.	0.47μFAC275V M

DIODE

D8001	MA111-X	SI DIODE	
D8002	MA111-X	SI DIODE	
D8003	MA111-X	SI DIODE	
D8004	MA111-X	SI DIODE	
D8005	MA111-X	SI DIODE	
D8006	MA111-X	SI DIODE	
D8007	P1241-04	CDS	
D8008	MA111-X	SI DIODE	
D8009	SLR-342MG-T16	LED(GRN)	
D8010	SPR-39MVMF	LED	
D8011	MA111-X	SI DIODE	
D8013	SLR-342YY-T16	LED(YLW)	
D8014	MA3068/M/-X	ZENER DIODE	
D8018	MA3033-X	ZENER DIODE	

TRANSISTOR

Q8001	2SA1037AK/QR/-X	SI TRANSISTOR	
Q8002	DTC124EKA-X	DIGI TRANSISTOR	
Q8003	DTA124EKA-X	DIGI TRANSISTOR	
Q8004	DTA124EKA-X	DIGI TRANSISTOR	
Q8006	DTC124EKA-X	DIGI TRANSISTOR	
Q8007	DTC124EKA-X	DIGI TRANSISTOR	

IC

IC8001	GP1U281Q	IR DETECT UNIT	
--------	----------	----------------	--

OTHERS

△	CEMG002-001Z	FUSE CLIP	(x2)
	CM36626-B01-H	LED HOLDER	
	CM35921-005-H	CDS HOLDER	
	QGF1220C2-25	CONNECTOR	
△ CN8002	QMF51E2-5R05	FUSE	5.0A
J8001	QNS0155-001	3.5 JACK	
J8003	QMCC004-C01	MINI DIN JACK	
J8004	CEMN011-001	PIN JACK	
J8005	CEMN011-002	PIN JACK	
J8006	CEMN011-003	PIN JACK	
LC8002	NQR0169-001X	EMI FILTER	
△ LF8901	QQR1253-001	LINE FILTER	
S8001	QSW0619-003Z	TACT SWITCH	MENU
S8002	QSW0619-003Z	TACT SWITCH	CH DOWN
S8003	QSW0619-003Z	TACT SWITCH	CH UP
S8004	QSW0619-003Z	TACT SWITCH	VOL DOWN
S8005	QSW0619-003Z	TACT SWITCH	VOL UP
S8006	QSW0619-003Z	TACT SWITCH	TV/VIDEO
△ S8901	QSW0750-001	PUSH SWITCH	MAIN POWER
△ VA8901	QAF0052-621	VARISTOR	

HV-34LZ

■ MICOM P.W. BOARD ASS'Y (SMF-0M701A)

△ Symbol No.	Part No.	Part Name	Description
RESISTOR			
R0001	NRSA63J-102X	MG R	1kΩ 1/16W J
R0002	NRSA63J-104X	MG R	100kΩ 1/16W J
R0003	NRSA63J-102X	MG R	1kΩ 1/16W J
R0004	NRSA63J-102X	MG R	1kΩ 1/16W J
R0005	NRSA63J-102X	MG R	1kΩ 1/16W J
R0006	NRSA63J-393X	MG R	39kΩ 1/16W J
R0018	NRSA63J-102X	MG R	1kΩ 1/16W J
R0019	NRSA63J-102X	MG R	1kΩ 1/16W J
R0020	NRSA63J-102X	MG R	1kΩ 1/16W J
R0022	NRSA63J-472X	MG R	4.7kΩ 1/16W J
R0024	NRSA63J-472X	MG R	4.7kΩ 1/16W J
R0026	NRSA63J-472X	MG R	4.7kΩ 1/16W J
R0030	NRSA63J-472X	MG R	4.7kΩ 1/16W J
R0032	NRSA63J-472X	MG R	4.7kΩ 1/16W J
R0034	NRSA63J-OR0X	MG R	0.0Ω 1/16W J
R0035	NRSA63J-OR0X	MG R	0.0Ω 1/16W J
R0036	NRSA63J-OR0X	MG R	0.0Ω 1/16W J
R0037	NRSA63J-OR0X	MG R	0.0Ω 1/16W J
R0038	NRSA63J-OR0X	MG R	0.0Ω 1/16W J
R0039	NRSA63J-OR0X	MG R	0.0Ω 1/16W J
R0040	NRSA63J-OR0X	MG R	0.0Ω 1/16W J
R0041	NRSA63J-OR0X	MG R	0.0Ω 1/16W J
R0042	NRSA63J-OR0X	MG R	0.0Ω 1/16W J
R0043	NRSA63J-OR0X	MG R	0.0Ω 1/16W J
R0044	NRSA63J-OR0X	MG R	0.0Ω 1/16W J
R0045	NRSA63J-OR0X	MG R	0.0Ω 1/16W J
R0046	NRSA63J-OR0X	MG R	0.0Ω 1/16W J
R0047	NRSA63J-OR0X	MG R	0.0Ω 1/16W J
R0048	NRSA63J-OR0X	MG R	0.0Ω 1/16W J
R0049	NRSA63J-OR0X	MG R	0.0Ω 1/16W J
R0050	NRSA63J-OR0X	MG R	0.0Ω 1/16W J
R0051	NRSA63J-OR0X	MG R	0.0Ω 1/16W J
R0052	NRSA63J-OR0X	MG R	0.0Ω 1/16W J
R0053	NRSA63J-OR0X	MG R	0.0Ω 1/16W J
R0055	NRSA63J-OR0X	MG R	0.0Ω 1/16W J
R0057	NRSA63J-OR0X	MG R	0.0Ω 1/16W J
R0058	NRSA63J-OR0X	MG R	0.0Ω 1/16W J
R0059	NRSA63J-OR0X	MG R	0.0Ω 1/16W J
R0060	NRSA63J-OR0X	MG R	0.0Ω 1/16W J
R0061	NRSA63J-OR0X	MG R	0.0Ω 1/16W J
R0062	NRSA63J-OR0X	MG R	0.0Ω 1/16W J
R0063	NRSA63J-OR0X	MG R	0.0Ω 1/16W J
R0064	NRSA63J-OR0X	MG R	0.0Ω 1/16W J
R0065	NRSA63J-OR0X	MG R	0.0Ω 1/16W J
R0066	NRSA63J-OR0X	MG R	0.0Ω 1/16W J
R0067	NRSA63J-OR0X	MG R	0.0Ω 1/16W J
R0068	NRSA63J-OR0X	MG R	0.0Ω 1/16W J
R0069	NRSA63J-OR0X	MG R	0.0Ω 1/16W J
R0070	NRSA63J-OR0X	MG R	0.0Ω 1/16W J
R0071	NRSA63J-OR0X	MG R	0.0Ω 1/16W J
R0072	NRSA63J-OR0X	MG R	0.0Ω 1/16W J
R0073	NRSA63J-OR0X	MG R	0.0Ω 1/16W J
R0074	NRSA63J-OR0X	MG R	0.0Ω 1/16W J
R0075	NRSA63J-OR0X	MG R	0.0Ω 1/16W J
R0076	NRSA63J-OR0X	MG R	0.0Ω 1/16W J
R0077	NRSA63J-OR0X	MG R	0.0Ω 1/16W J
R0081	NCF31CZ-104X	C CAP.	0.1μF 16V Z
R0087	NRSA63J-221X	MG R	220Ω 1/16W J
R0089	NRSA63J-221X	MG R	220Ω 1/16W J
R0090	NRSA63J-221X	MG R	220Ω 1/16W J
R0091	NRSA63J-221X	MG R	220Ω 1/16W J
R0092	NRSA63J-472X	MG R	4.7kΩ 1/16W J
R0093	NRSA63J-221X	MG R	220Ω 1/16W J
R0094	NRSA63J-472X	MG R	4.7kΩ 1/16W J
R0095	NRSA63J-473X	MG R	47kΩ 1/16W J
R0096	NRSA63J-221X	MG R	220Ω 1/16W J
R0097	NRSA63J-102X	MG R	1kΩ 1/16W J
R0098	NRSA63J-OR0X	MG R	0.0Ω 1/16W J
R0107	NRSA63J-102X	MG R	1kΩ 1/16W J
R0108	NRSA63J-OR0X	MG R	0.0Ω 1/16W J
R0109	NRSA63J-OR0X	MG R	0.0Ω 1/16W J
R0110	NRSA63J-102X	MG R	1kΩ 1/16W J
R0111	NRSA63J-103X	MG R	10kΩ 1/16W J
R0112	NRSA63J-102X	MG R	1kΩ 1/16W J
R0113	NRSA63J-103X	MG R	10kΩ 1/16W J
R0114	NRSA63J-103X	MG R	10kΩ 1/16W J
R0119	NRSA63J-563X	MG R	56kΩ 1/16W J
R0120	NRSA63J-332X	MG R	3.3kΩ 1/16W J
R0121	NRSA63J-182X	MG R	1.8kΩ 1/16W J

△ Symbol No.	Part No.	Part Name	Description
RESISTOR			
R0122	NRSA63J-103X	MG R	10kΩ 1/16W J
R0123	NRSA63J-682X	MG R	6.8kΩ 1/16W J
R0124	NRSA63J-101X	MG R	100Ω 1/16W J
R0125	NRSA63J-472X	MG R	4.7kΩ 1/16W J
R0126	NRSA63J-472X	MG R	4.7kΩ 1/16W J
R0127	NRSA63J-472X	MG R	4.7kΩ 1/16W J
R0128	NRSA63J-472X	MG R	4.7kΩ 1/16W J
R0129	NRSA63J-823X	MG R	82kΩ 1/16W J
R0130	NRSA63J-104X	MG R	100kΩ 1/16W J
R0131	NRSA63J-823X	MG R	82kΩ 1/16W J
R0132	NRSA63J-104X	MG R	100kΩ 1/16W J
R0133	NRSA63J-0R0X	MG R	0.0Ω 1/16W J
R0135	NRSA63J-102X	MG R	1kΩ 1/16W J
R0136	NRSA63J-103X	MG R	10kΩ 1/16W J
R0137	NRSA63J-222X	MG R	2.2kΩ 1/16W J
R0138	NRSA63J-222X	MG R	2.2kΩ 1/16W J
R0139	NRSA63J-222X	MG R	2.2kΩ 1/16W J
R0140	NRSA63J-103X	MG R	10kΩ 1/16W J
R0144	NRSA63J-103X	MG R	10kΩ 1/16W J
R0147	NRSA63J-472X	MG R	4.7kΩ 1/16W J
R0148	NRSA63J-472X	MG R	4.7kΩ 1/16W J
R0149	NRSA63J-472X	MG R	4.7kΩ 1/16W J
R0151	NRSA63J-183X	MG R	18kΩ 1/16W J
R0152	NRSA63J-221X	MG R	220Ω 1/16W J
R0153	NRSA63J-221X	MG R	220Ω 1/16W J
R0154	NRSA63J-221X	MG R	220Ω 1/16W J
R0155	NRSA63J-101X	MG R	100Ω 1/16W J
R0156	NRSA63J-101X	MG R	100Ω 1/16W J
R0158	NRSA63J-221X	MG R	220Ω 1/16W J
R0161	NRSA63J-102X	MG R	1kΩ 1/16W J
R0162	NRSA63J-153X	MG R	15kΩ 1/16W J
R0163	NRSA63J-682X	MG R	6.8kΩ 1/16W J
R0165	NRSA63J-103X	MG R	10kΩ 1/16W J
R0166	NRSA63J-223X	MG R	22kΩ 1/16W J
R0167	NRSA63J-103X	MG R	10kΩ 1/16W J
R0168	NRSA63J-471X	MG R	470Ω 1/16W J

CAPACITOR

C0001	QETN0JM-477Z	E CAP.	470μF 6.3V M
C0002	NCF31CZ-104X	C CAP.	0.1μF 16V Z
C0003	NCB11CK-225X	C CAP.	2.2μF 16V K
C0004	QETN0JM-108Z	E CAP.	1000μF 6.3V M
C0005	NCB11CK-225X	C CAP.	2.2μF 16V K
C0006	NCB11CK-225X	C CAP.	2.2μF 16V K
C0007	NEH71CM-476X	E CAP.	47μF 16V M
C0008	NCB11CK-225X	C CAP.	2.2μF 16V K
C0012	NCF31CZ-104X	C CAP.	0.1μF 16V Z
C0013	NCF31CZ-104X	C CAP.	0.1μF 16V Z
C0014	NDC31HJ-821X	C CAP.	820pF 50V J
C0017	NDC31HJ-330X	C CAP.	33pF 50V J
C0018	NDC31HJ-820X	C CAP.	82pF 50V J
C0019	NEH71CM-476X	E CAP.	47μF 16V M
C0020	NCF31CZ-104X	C CAP.	0.1μF 16V Z
C0021	NEH71CM-476X	E CAP.	47μF 16V M
C0023	NCB31EK-333X	C CAP.	0.033μF 25V K
C0024	NCF31CZ-104X	C CAP.	0.1μF 16V Z
C0025	NCB31EK-333X	C CAP.	0.033μF 25V K
C0026	NCF31CZ-104X	C CAP.	0.1μF 16V Z
C0027	NEH71CM-476X	E CAP.	47μF 16V M
C0028	NEH71CM-476X	E CAP.	47μF 16V M
C0029	NDC31HJ-151X	C CAP.	150pF 50V J
C0030	NCF31CZ-104X	C CAP.	0.1μF 16V Z
C0031	NCF31CZ-104X	C CAP.	0.1μF 16V Z
C0032	NCF31CZ-104X	C CAP.	0.1μF 16V Z
C0034	NCF31CZ-104X	C CAP.	0.1μF 16V Z
C0035	NCF31CZ-104X	C CAP.	0.1μF 16V Z
C0036	NCF31CZ-104X	C CAP.	0.1μF 16V Z
C0037	NCF31CZ-104X	C CAP.	0.1μF 16V Z
C0038	NCF31CZ-104X	C CAP.	0.1μF 16V Z
C0039	NCF31CZ-104X	C CAP.	0.1μF 16V Z
C0040	NDC31HJ-330X	C CAP.	33pF 50V J
C0041	NDC31HJ-270X	C CAP.	27pF 50V J
C0042	NCF31CZ-104X	C CAP.	0.1μF 16V Z
C0043	NCF31CZ-104X	C CAP.	0.1μF 16V Z
C0045	NCF31CZ-104X	C CAP.	0.1μF 16V Z
C0046	NCF31CZ-104X	C CAP.	0.1μF 16V Z
C0047	NCF31CZ-104X	C CAP.	0.1μF 16V Z
C0048	NEH71CM-476X	E CAP.	47μF 16V M

△ Symbol No.	Part No.	Part Name	Description
CAPACITOR			
C0049	NCF31CZ-104X	C CAP.	0.1μF 16V Z
C0050	NCF31CZ-104X	C CAP.	0.1μF 16V Z
C0051	NEH71CM-476X	E CAP.	47μF 16V M
C0052	NCF31CZ-104X	C CAP.	0.1μF 16V Z
C0053	NCF31CZ-104X	C CAP.	0.1μF 16V Z
C0054	NCF31CZ-104X	C CAP.	0.1μF 16V Z
C0055	NCF31CZ-104X	C CAP.	0.1μF 16V Z
C0056	NCF31CZ-104X	C CAP.	0.1μF 16V Z
C0057	NCF31CZ-104X	C CAP.	0.1μF 16V Z
C0059	NEH71CM-106X	E CAP.	10μF 16V M
C0060	NEH71CM-106X	E CAP.	10μF 16V M
C0061	NEH71CM-106X	E CAP.	10μF 16V M
C0062	NRSA63J-0R0X	MG R	0.0Ω 1/16W J
C0063	NDC31HJ-820X	C CAP.	82pF 50V J
C0064	NDC31HJ-820X	C CAP.	82pF 50V J
C0065	NDC31HJ-820X	C CAP.	82pF 50V J
C0070	NEH71HM-225X	E CAP.	2.2μF 50V M

COIL

L0001	NQL092K-4R7X	INDUCTOR	4.7μH
L0003	NQL092K-4R7X	INDUCTOR	4.7μH
L0005	NQL092K-4R7X	INDUCTOR	4.7μH
L0006	NQL092K-4R7X	INDUCTOR	4.7μH
L0007	NQL092K-4R7X	INDUCTOR	4.7μH
L0008	NQL092K-4R7X	INDUCTOR	4.7μH
L0009	NQL034K-4R7X	INDUCTOR	4.7μH
L0010	NQL092K-4R7X	INDUCTOR	4.7μH
L0011	NQL092K-4R7X	INDUCTOR	4.7μH
L0012	NQL092K-4R7X	INDUCTOR	4.7μH
L0013	NQL092K-4R7X	INDUCTOR	4.7μH
L0014	NQL092K-4R7X	INDUCTOR	4.7μH
L0015	NQL034K-4R7X	INDUCTOR	4.7μH
L0016	NQL034K-4R7X	INDUCTOR	4.7μH
L0017	NQL092K-1R5X	INDUCTOR	1.5μH
L0018	NQL092K-1R5X	INDUCTOR	1.5μH
L0019	NQL092K-1R5X	INDUCTOR	1.5μH
L0020	NQL092K-1R5X	INDUCTOR	1.5μH
L0021	NQL092K-1R5X	INDUCTOR	1.5μH
L0022	NQL092K-1R5X	INDUCTOR	1.5μH

DIODE

D0001	MA111-X	SI DIODE
D0005	MA3056/M/-X	ZENER DIODE
D0006	MA3056/M/-X	ZENER DIODE
D0007	MA3056/M/-X	ZENER DIODE
D0008	MA3056/M/-X	ZENER DIODE
D0010	MA3068/M/-X	ZENER DIODE

TRANSISTOR

Q0001	2SC2712/YG/-X	SI TRANSISTOR
Q0002	2SC2712/YG/-X	SI TRANSISTOR
Q0007	2SA1162/YG/-X	SI TRANSISTOR
Q0021	2SC2712/YG/-X	SI TRANSISTOR
Q0022	2SC2712/YG/-X	SI TRANSISTOR

IC

IC0001	SDA6000	IC	(SERVICE)
IC0002	MR27V3202FJMMAX	IC	
IC0003	K45641632F-TC75	IC(DIGITAL)	
IC0004	AT24WC32-29WZ	IC	
IC0005	S-80828CNNB-W	IC	
IC0901	TA48M025F-X	IC	
IC0902	TA48M033F-X	IC	
IC0903	MM1437AF-X	IC	

OTHERS

CN0001	QGB1505K1-50	B TO B CONNE	
K0001	NRSA63J-390X	MG R	39Ω 1/16W J
K0002	NQR0389-003X	FERRITE BEADS	
K0003	NRSA63J-0R0X	MG R	0.0Ω 1/16W J
K0004	NQR0389-003X	FERRITE BEADS	
LC0001	NQR0313-007X	EMI FILTER	
LC0002	NQR0431-001X	EMI FILTER	
X0001	QAX0669-001Z	CRYSTAL	

HV-34LZ/HK

■ MICOM P.W. BOARD ASS'Y (SMF-0M702A)

Symbol No.	Part No.	Part Name	Description
------------	----------	-----------	-------------

RESISTOR

R0001	NRSA63J-102X	MG R	1kΩ 1/16W J
R0002	NRSA63J-104X	MG R	100kΩ 1/16W J
R0003	NRSA63J-102X	MG R	1kΩ 1/16W J
R0004	NRSA63J-102X	MG R	1kΩ 1/16W J
R0005	NRSA63J-102X	MG R	1kΩ 1/16W J
R0006	NRSA63J-393X	MG R	39kΩ 1/16W J
R0018	NRSA63J-102X	MG R	1kΩ 1/16W J
R0019	NRSA63J-102X	MG R	1kΩ 1/16W J
R0020	NRSA63J-102X	MG R	1kΩ 1/16W J
R0022	NRSA63J-472X	MG R	4.7kΩ 1/16W J
R0024	NRSA63J-472X	MG R	4.7kΩ 1/16W J
R0026	NRSA63J-472X	MG R	4.7kΩ 1/16W J
R0030	NRSA63J-472X	MG R	4.7kΩ 1/16W J
R0032	NRSA63J-472X	MG R	4.7kΩ 1/16W J
R0034	NRSA63J-0R0X	MG R	0.0Ω 1/16W J
R0035	NRSA63J-0R0X	MG R	0.0Ω 1/16W J
R0036	NRSA63J-0R0X	MG R	0.0Ω 1/16W J
R0037	NRSA63J-0R0X	MG R	0.0Ω 1/16W J
R0038	NRSA63J-0R0X	MG R	0.0Ω 1/16W J
R0039	NRSA63J-0R0X	MG R	0.0Ω 1/16W J
R0040	NRSA63J-0R0X	MG R	0.0Ω 1/16W J
R0041	NRSA63J-0R0X	MG R	0.0Ω 1/16W J
R0042	NRSA63J-0R0X	MG R	0.0Ω 1/16W J
R0043	NRSA63J-0R0X	MG R	0.0Ω 1/16W J
R0044	NRSA63J-0R0X	MG R	0.0Ω 1/16W J
R0045	NRSA63J-0R0X	MG R	0.0Ω 1/16W J
R0046	NRSA63J-0R0X	MG R	0.0Ω 1/16W J
R0047	NRSA63J-0R0X	MG R	0.0Ω 1/16W J
R0048	NRSA63J-0R0X	MG R	0.0Ω 1/16W J
R0049	NRSA63J-0R0X	MG R	0.0Ω 1/16W J
R0050	NRSA63J-0R0X	MG R	0.0Ω 1/16W J
R0051	NRSA63J-0R0X	MG R	0.0Ω 1/16W J
R0052	NRSA63J-0R0X	MG R	0.0Ω 1/16W J
R0053	NRSA63J-0R0X	MG R	0.0Ω 1/16W J
R0055	NRSA63J-0R0X	MG R	0.0Ω 1/16W J
R0057	NRSA63J-0R0X	MG R	0.0Ω 1/16W J
R0058	NRSA63J-0R0X	MG R	0.0Ω 1/16W J
R0059	NRSA63J-0R0X	MG R	0.0Ω 1/16W J
R0060	NRSA63J-0R0X	MG R	0.0Ω 1/16W J
R0061	NRSA63J-0R0X	MG R	0.0Ω 1/16W J
R0062	NRSA63J-0R0X	MG R	0.0Ω 1/16W J
R0063	NRSA63J-0R0X	MG R	0.0Ω 1/16W J
R0064	NRSA63J-0R0X	MG R	0.0Ω 1/16W J
R0065	NRSA63J-0R0X	MG R	0.0Ω 1/16W J
R0066	NRSA63J-0R0X	MG R	0.0Ω 1/16W J
R0067	NRSA63J-0R0X	MG R	0.0Ω 1/16W J
R0068	NRSA63J-0R0X	MG R	0.0Ω 1/16W J
R0069	NRSA63J-0R0X	MG R	0.0Ω 1/16W J
R0070	NRSA63J-0R0X	MG R	0.0Ω 1/16W J
R0071	NRSA63J-0R0X	MG R	0.0Ω 1/16W J
R0072	NRSA63J-0R0X	MG R	0.0Ω 1/16W J
R0073	NRSA63J-0R0X	MG R	0.0Ω 1/16W J
R0074	NRSA63J-0R0X	MG R	0.0Ω 1/16W J
R0075	NRSA63J-0R0X	MG R	0.0Ω 1/16W J
R0076	NRSA63J-0R0X	MG R	0.0Ω 1/16W J
R0077	NRSA63J-0R0X	MG R	0.0Ω 1/16W J
R0081	NCF31CZ-104X	C CAP.	0.1μF 16V Z
R0087	NRSA63J-221X	MG R	220Ω 1/16W J
R0089	NRSA63J-221X	MG R	220Ω 1/16W J
R0090	NRSA63J-221X	MG R	220Ω 1/16W J
R0091	NRSA63J-221X	MG R	220Ω 1/16W J
R0092	NRSA63J-472X	MG R	4.7kΩ 1/16W J
R0093	NRSA63J-221X	MG R	220Ω 1/16W J
R0094	NRSA63J-472X	MG R	4.7kΩ 1/16W J
R0095	NRSA63J-473X	MG R	47kΩ 1/16W J
R0096	NRSA63J-221X	MG R	220Ω 1/16W J
R0097	NRSA63J-102X	MG R	1kΩ 1/16W J
R0098	NRSA63J-0R0X	MG R	0.0Ω 1/16W J
R0107	NRSA63J-102X	MG R	1kΩ 1/16W J
R0108	NRSA63J-0R0X	MG R	0.0Ω 1/16W J
R0109	NRSA63J-0R0X	MG R	0.0Ω 1/16W J
R0110	NRSA63J-102X	MG R	1kΩ 1/16W J
R0111	NRSA63J-103X	MG R	10kΩ 1/16W J
R0112	NRSA63J-102X	MG R	1kΩ 1/16W J
R0113	NRSA63J-103X	MG R	10kΩ 1/16W J
R0114	NRSA63J-103X	MG R	10kΩ 1/16W J

Symbol No.	Part No.	Part Name	Description
------------	----------	-----------	-------------

RESISTOR

R0119	NRSA63J-563X	MG R	56kΩ 1/16W J
R0120	NRSA63J-332X	MG R	3.3kΩ 1/16W J
R0121	NRSA63J-182X	MG R	1.8kΩ 1/16W J
R0122	NRSA63J-103X	MG R	10kΩ 1/16W J
R0123	NRSA63J-682X	MG R	6.8kΩ 1/16W J
R0124	NRSA63J-101X	MG R	100Ω 1/16W J
R0125	NRSA63J-472X	MG R	4.7kΩ 1/16W J
R0126	NRSA63J-472X	MG R	4.7kΩ 1/16W J
R0127	NRSA63J-472X	MG R	4.7kΩ 1/16W J
R0128	NRSA63J-472X	MG R	4.7kΩ 1/16W J
R0129	NRSA63J-823X	MG R	82kΩ 1/16W J
R0130	NRSA63J-104X	MG R	100kΩ 1/16W J
R0131	NRSA63J-823X	MG R	82kΩ 1/16W J
R0132	NRSA63J-104X	MG R	100kΩ 1/16W J
R0133	NRSA63J-0R0X	MG R	0.0Ω 1/16W J
R0135	NRSA63J-102X	MG R	1kΩ 1/16W J
R0136	NRSA63J-103X	MG R	10kΩ 1/16W J
R0137	NRSA63J-222X	MG R	2.2kΩ 1/16W J
R0138	NRSA63J-222X	MG R	2.2kΩ 1/16W J
R0139	NRSA63J-222X	MG R	2.2kΩ 1/16W J
R0140	NRSA63J-103X	MG R	10kΩ 1/16W J
R0144	NRSA63J-103X	MG R	10kΩ 1/16W J
R0147	NRSA63J-472X	MG R	4.7kΩ 1/16W J
R0148	NRSA63J-472X	MG R	4.7kΩ 1/16W J
R0149	NRSA63J-472X	MG R	4.7kΩ 1/16W J
R0151	NRSA63J-183X	MG R	18kΩ 1/16W J
R0152	NRSA63J-221X	MG R	220Ω 1/16W J
R0153	NRSA63J-221X	MG R	220Ω 1/16W J
R0154	NRSA63J-221X	MG R	220Ω 1/16W J
R0155	NRSA63J-101X	MG R	100Ω 1/16W J
R0156	NRSA63J-101X	MG R	100Ω 1/16W J
R0158	NRSA63J-221X	MG R	220Ω 1/16W J
R0161	NRSA63J-102X	MG R	1kΩ 1/16W J
R0162	NRSA63J-153X	MG R	15kΩ 1/16W J
R0163	NRSA63J-682X	MG R	6.8kΩ 1/16W J
R0165	NRSA63J-103X	MG R	10kΩ 1/16W J
R0166	NRSA63J-223X	MG R	22kΩ 1/16W J
R0167	NRSA63J-103X	MG R	10kΩ 1/16W J
R0168	NRSA63J-471X	MG R	470Ω 1/16W J

CAPACITOR

C0001	QETN0JM-477Z	E CAP.	470μF 6.3V M
C0002	NCF31CZ-104X	C CAP.	0.1μF 16V Z
C0003	NCB11CK-225X	C CAP.	2.2μF 16V K
C0004	QETN0JM-108Z	E CAP.	1000μF 6.3V M
C0005	NCB11CK-225X	C CAP.	2.2μF 16V K
C0006	NCB11CK-225X	C CAP.	2.2μF 16V K
C0007	NEH71CM-476X	E CAP.	47μF 16V M
C0008	NCB11CK-225X	C CAP.	2.2μF 16V K
C0012	NCF31CZ-104X	C CAP.	0.1μF 16V Z
C0013	NCF31CZ-104X	C CAP.	0.1μF 16V Z
C0014	NDC31HJ-821X	C CAP.	820pF 50V J
C0017	NDC31HJ-330X	C CAP.	33pF 50V J
C0018	NDC31HJ-820X	C CAP.	82pF 50V J
C0019	NEH71CM-476X	E CAP.	47μF 16V M
C0020	NCF31CZ-104X	C CAP.	0.1μF 16V Z
C0021	NEH71CM-476X	E CAP.	47μF 16V M
C0023	NCB31EK-333X	C CAP.	0.033μF 25V K
C0024	NCF31CZ-104X	C CAP.	0.1μF 16V Z
C0025	NCB31EK-333X	C CAP.	0.033μF 25V K
C0026	NCF31CZ-104X	C CAP.	0.1μF 16V Z
C0027	NEH71CM-476X	E CAP.	47μF 16V M
C0028	NEH71CM-476X	E CAP.	47μF 16V M
C0029	NDC31HJ-151X	C CAP.	150pF 50V J
C0030	NCF31CZ-104X	C CAP.	0.1μF 16V Z
C0031	NCF31CZ-104X	C CAP.	0.1μF 16V Z
C0032	NCF31CZ-104X	C CAP.	0.1μF 16V Z
C0034	NCF31CZ-104X	C CAP.	0.1μF 16V Z
C0035	NCF31CZ-104X	C CAP.	0.1μF 16V Z
C0036	NCF31CZ-104X	C CAP.	0.1μF 16V Z
C0037	NCF31CZ-104X	C CAP.	0.1μF 16V Z
C0038	NCF31CZ-104X	C CAP.	0.1μF 16V Z
C0039	NCF31CZ-104X	C CAP.	0.1μF 16V Z
C0040	NDC31HJ-330X	C CAP.	33pF 50V J
C0041	NDC31HJ-270X	C CAP.	27pF 50V J

△ Symbol No.	Part No.	Part Name	Description
CAPACITOR			
C0042	NCF31CZ-104X	C CAP.	0.1μF 16V Z
C0043	NCF31CZ-104X	C CAP.	0.1μF 16V Z
C0045	NCF31CZ-104X	C CAP.	0.1μF 16V Z
C0046	NCF31CZ-104X	C CAP.	0.1μF 16V Z
C0047	NCF31CZ-104X	C CAP.	0.1μF 16V Z
C0048	NEH71CM-476X	E CAP.	47μF 16V M
C0049	NCF31CZ-104X	C CAP.	0.1μF 16V Z
C0050	NCF31CZ-104X	C CAP.	0.1μF 16V Z
C0051	NEH71CM-476X	E CAP.	47μF 16V M
C0052	NCF31CZ-104X	C CAP.	0.1μF 16V Z
C0053	NCF31CZ-104X	C CAP.	0.1μF 16V Z
C0054	NCF31CZ-104X	C CAP.	0.1μF 16V Z
C0055	NCF31CZ-104X	C CAP.	0.1μF 16V Z
C0056	NCF31CZ-104X	C CAP.	0.1μF 16V Z
C0057	NCF31CZ-104X	C CAP.	0.1μF 16V Z
C0059	NEH71CM-106X	E CAP.	10μF 16V M
C0060	NEH71CM-106X	E CAP.	10μF 16V M
C0061	NEH71CM-106X	E CAP.	10μF 16V M
C0062	NRSA63J-0R0X	MG R	0.0Ω 1/16W J
C0063	NDC31HJ-820X	C CAP.	82pF 50V J
C0064	NDC31HJ-820X	C CAP.	82pF 50V J
C0065	NDC31HJ-820X	C CAP.	82pF 50V J
C0070	NEH71HM-225X	E CAP.	2.2μF 50V M

COIL

L0001	NQL092K-4R7X	INDUCTOR	4.7μH
L0003	NQL092K-4R7X	INDUCTOR	4.7μH
L0005	NQL092K-4R7X	INDUCTOR	4.7μH
L0006	NQL092K-4R7X	INDUCTOR	4.7μH
L0007	NQL092K-4R7X	INDUCTOR	4.7μH
L0008	NQL092K-4R7X	INDUCTOR	4.7μH
L0009	NQL034K-4R7X	INDUCTOR	4.7μH
L0010	NQL092K-4R7X	INDUCTOR	4.7μH
L0011	NQL092K-4R7X	INDUCTOR	4.7μH
L0012	NQL092K-4R7X	INDUCTOR	4.7μH
L0013	NQL092K-4R7X	INDUCTOR	4.7μH
L0014	NQL092K-4R7X	INDUCTOR	4.7μH
L0015	NQL034K-4R7X	INDUCTOR	4.7μH
L0016	NQL034K-4R7X	INDUCTOR	4.7μH
L0017	NQL092K-1R5X	INDUCTOR	1.5μH
L0018	NQL092K-1R5X	INDUCTOR	1.5μH
L0019	NQL092K-1R5X	INDUCTOR	1.5μH
L0020	NQL092K-1R5X	INDUCTOR	1.5μH
L0021	NQL092K-1R5X	INDUCTOR	1.5μH
L0022	NQL092K-1R5X	INDUCTOR	1.5μH

DIODE

D0001	MA111-X	SI DIODE
D0005	MA3056/M/-X	ZENER DIODE
D0006	MA3056/M/-X	ZENER DIODE
D0007	MA3056/M/-X	ZENER DIODE
D0008	MA3056/M/-X	ZENER DIODE
D0010	MA3068/M/-X	ZENER DIODE

TRANSISTOR

Q0001	2SC2712/YG/-X	SI TRANSISTOR
Q0002	2SC2712/YG/-X	SI TRANSISTOR
Q0007	2SA1162/YG/-X	SI TRANSISTOR
Q0021	2SC2712/YG/-X	SI TRANSISTOR
Q0022	2SC2712/YG/-X	SI TRANSISTOR

IC

IC0001	SDA6000	IC	(SERVICE)
IC0002	MR27V3202FJMMAX	IC	
IC0003	K45641632F-TC75	IC (DIGITAL)	
IC0004	AT24WC32-29WZ	IC	
IC0005	S-80828CNNB-W	IC	
IC0901	TA48M025F-X	IC	
IC0902	TA48M033F-X	IC	
IC0903	MM1437AF-X	IC	

△ Symbol No.	Part No.	Part Name	Description
OTHERS			
CN0001	QGB1505K1-50	B TO B CONNE	
K0001	NRSA63J-390X	MG R	39Ω 1/16W J
K0002	NQR0389-003X	FERRITE BEADS	
K0003	NRSA63J-0R0X	MG R	0.0Ω 1/16W J
K0004	NQR0389-003X	FERRITE BEADS	
LC0001	NQR0313-007X	EMI FILTER	
LC0002	NQR0431-001X	EMI FILTER	
X0001	QAX0669-001Z	CRYSTAL	

HV-34LZ/-A

■ MICOM P.W. BOARD ASS'Y (SMF-0M703A)

Symbol No.	Part No.	Part Name	Description
------------	----------	-----------	-------------

RESISTOR

R0001	NRSA63J-102X	MG R	1kΩ 1/16W J
R0002	NRSA63J-104X	MG R	100kΩ 1/16W J
R0003	NRSA63J-102X	MG R	1kΩ 1/16W J
R0004	NRSA63J-102X	MG R	1kΩ 1/16W J
R0005	NRSA63J-102X	MG R	1kΩ 1/16W J
R0006	NRSA63J-393X	MG R	39kΩ 1/16W J
R0018	NRSA63J-102X	MG R	1kΩ 1/16W J
R0019	NRSA63J-102X	MG R	1kΩ 1/16W J
R0020	NRSA63J-102X	MG R	1kΩ 1/16W J
R0022	NRSA63J-472X	MG R	4.7kΩ 1/16W J
R0024	NRSA63J-472X	MG R	4.7kΩ 1/16W J
R0026	NRSA63J-472X	MG R	4.7kΩ 1/16W J
R0030	NRSA63J-472X	MG R	4.7kΩ 1/16W J
R0032	NRSA63J-472X	MG R	4.7kΩ 1/16W J
R0034	NRSA63J-0R0X	MG R	0.0Ω 1/16W J
R0035	NRSA63J-0R0X	MG R	0.0Ω 1/16W J
R0036	NRSA63J-0R0X	MG R	0.0Ω 1/16W J
R0037	NRSA63J-0R0X	MG R	0.0Ω 1/16W J
R0038	NRSA63J-0R0X	MG R	0.0Ω 1/16W J
R0039	NRSA63J-0R0X	MG R	0.0Ω 1/16W J
R0040	NRSA63J-0R0X	MG R	0.0Ω 1/16W J
R0041	NRSA63J-0R0X	MG R	0.0Ω 1/16W J
R0042	NRSA63J-0R0X	MG R	0.0Ω 1/16W J
R0043	NRSA63J-0R0X	MG R	0.0Ω 1/16W J
R0044	NRSA63J-0R0X	MG R	0.0Ω 1/16W J
R0045	NRSA63J-0R0X	MG R	0.0Ω 1/16W J
R0046	NRSA63J-0R0X	MG R	0.0Ω 1/16W J
R0047	NRSA63J-0R0X	MG R	0.0Ω 1/16W J
R0048	NRSA63J-0R0X	MG R	0.0Ω 1/16W J
R0049	NRSA63J-0R0X	MG R	0.0Ω 1/16W J
R0050	NRSA63J-0R0X	MG R	0.0Ω 1/16W J
R0051	NRSA63J-0R0X	MG R	0.0Ω 1/16W J
R0052	NRSA63J-0R0X	MG R	0.0Ω 1/16W J
R0053	NRSA63J-0R0X	MG R	0.0Ω 1/16W J
R0055	NRSA63J-0R0X	MG R	0.0Ω 1/16W J
R0057	NRSA63J-0R0X	MG R	0.0Ω 1/16W J
R0058	NRSA63J-0R0X	MG R	0.0Ω 1/16W J
R0059	NRSA63J-0R0X	MG R	0.0Ω 1/16W J
R0060	NRSA63J-0R0X	MG R	0.0Ω 1/16W J
R0061	NRSA63J-0R0X	MG R	0.0Ω 1/16W J
R0062	NRSA63J-0R0X	MG R	0.0Ω 1/16W J
R0063	NRSA63J-0R0X	MG R	0.0Ω 1/16W J
R0064	NRSA63J-0R0X	MG R	0.0Ω 1/16W J
R0065	NRSA63J-0R0X	MG R	0.0Ω 1/16W J
R0066	NRSA63J-0R0X	MG R	0.0Ω 1/16W J
R0067	NRSA63J-0R0X	MG R	0.0Ω 1/16W J
R0068	NRSA63J-0R0X	MG R	0.0Ω 1/16W J
R0069	NRSA63J-0R0X	MG R	0.0Ω 1/16W J
R0070	NRSA63J-0R0X	MG R	0.0Ω 1/16W J
R0071	NRSA63J-0R0X	MG R	0.0Ω 1/16W J
R0072	NRSA63J-0R0X	MG R	0.0Ω 1/16W J
R0073	NRSA63J-0R0X	MG R	0.0Ω 1/16W J
R0074	NRSA63J-0R0X	MG R	0.0Ω 1/16W J
R0075	NRSA63J-0R0X	MG R	0.0Ω 1/16W J
R0076	NRSA63J-0R0X	MG R	0.0Ω 1/16W J
R0077	NRSA63J-0R0X	MG R	0.0Ω 1/16W J
R0081	NCF31CZ-104X	C CAP.	0.1μF 16V Z
R0087	NRSA63J-221X	MG R	220Ω 1/16W J
R0089	NRSA63J-221X	MG R	220Ω 1/16W J
R0090	NRSA63J-221X	MG R	220Ω 1/16W J
R0091	NRSA63J-221X	MG R	220Ω 1/16W J
R0092	NRSA63J-472X	MG R	4.7kΩ 1/16W J
R0093	NRSA63J-221X	MG R	220Ω 1/16W J
R0094	NRSA63J-472X	MG R	4.7kΩ 1/16W J
R0095	NRSA63J-473X	MG R	47kΩ 1/16W J
R0096	NRSA63J-221X	MG R	220Ω 1/16W J
R0097	NRSA63J-102X	MG R	1kΩ 1/16W J
R0098	NRSA63J-0R0X	MG R	0.0Ω 1/16W J
R0107	NRSA63J-102X	MG R	1kΩ 1/16W J
R0108	NRSA63J-0R0X	MG R	0.0Ω 1/16W J
R0109	NRSA63J-0R0X	MG R	0.0Ω 1/16W J
R0110	NRSA63J-102X	MG R	1kΩ 1/16W J
R0111	NRSA63J-103X	MG R	10kΩ 1/16W J
R0112	NRSA63J-102X	MG R	1kΩ 1/16W J
R0113	NRSA63J-103X	MG R	10kΩ 1/16W J
R0114	NRSA63J-103X	MG R	10kΩ 1/16W J

Symbol No.	Part No.	Part Name	Description
------------	----------	-----------	-------------

RESISTOR

R0119	NRSA63J-563X	MG R	56kΩ 1/16W J
R0120	NRSA63J-332X	MG R	3.3kΩ 1/16W J
R0121	NRSA63J-182X	MG R	1.8kΩ 1/16W J
R0122	NRSA63J-103X	MG R	10kΩ 1/16W J
R0123	NRSA63J-682X	MG R	6.8kΩ 1/16W J
R0124	NRSA63J-101X	MG R	100Ω 1/16W J
R0125	NRSA63J-472X	MG R	4.7kΩ 1/16W J
R0126	NRSA63J-472X	MG R	4.7kΩ 1/16W J
R0127	NRSA63J-472X	MG R	4.7kΩ 1/16W J
R0128	NRSA63J-472X	MG R	4.7kΩ 1/16W J
R0129	NRSA63J-823X	MG R	82kΩ 1/16W J
R0130	NRSA63J-104X	MG R	100kΩ 1/16W J
R0131	NRSA63J-823X	MG R	82kΩ 1/16W J
R0132	NRSA63J-104X	MG R	100kΩ 1/16W J
R0133	NRSA63J-0R0X	MG R	0.0Ω 1/16W J
R0135	NRSA63J-102X	MG R	1kΩ 1/16W J
R0136	NRSA63J-103X	MG R	10kΩ 1/16W J
R0137	NRSA63J-222X	MG R	2.2kΩ 1/16W J
R0138	NRSA63J-222X	MG R	2.2kΩ 1/16W J
R0139	NRSA63J-222X	MG R	2.2kΩ 1/16W J
R0140	NRSA63J-103X	MG R	10kΩ 1/16W J
R0144	NRSA63J-103X	MG R	10kΩ 1/16W J
R0147	NRSA63J-472X	MG R	4.7kΩ 1/16W J
R0148	NRSA63J-472X	MG R	4.7kΩ 1/16W J
R0149	NRSA63J-472X	MG R	4.7kΩ 1/16W J
R0151	NRSA63J-183X	MG R	18kΩ 1/16W J
R0152	NRSA63J-221X	MG R	220Ω 1/16W J
R0153	NRSA63J-221X	MG R	220Ω 1/16W J
R0154	NRSA63J-221X	MG R	220Ω 1/16W J
R0155	NRSA63J-101X	MG R	100Ω 1/16W J
R0156	NRSA63J-101X	MG R	100Ω 1/16W J
R0158	NRSA63J-221X	MG R	220Ω 1/16W J
R0161	NRSA63J-102X	MG R	1kΩ 1/16W J
R0162	NRSA63J-153X	MG R	15kΩ 1/16W J
R0163	NRSA63J-682X	MG R	6.8kΩ 1/16W J
R0165	NRSA63J-103X	MG R	10kΩ 1/16W J
R0166	NRSA63J-223X	MG R	22kΩ 1/16W J
R0167	NRSA63J-103X	MG R	10kΩ 1/16W J
R0168	NRSA63J-471X	MG R	470Ω 1/16W J

CAPACITOR

C0001	QETN0JM-477Z	E CAP.	470μF 6.3V M
C0002	NCF31CZ-104X	C CAP.	0.1μF 16V Z
C0003	NCB11CK-225X	C CAP.	2.2μF 16V K
C0004	QETN0JM-108Z	E CAP.	1000μF 6.3V M
C0005	NCB11CK-225X	C CAP.	2.2μF 16V K
C0006	NCB11CK-225X	C CAP.	2.2μF 16V K
C0007	NEH71CM-476X	E CAP.	47μF 16V M
C0008	NCB11CK-225X	C CAP.	2.2μF 16V K
C0012	NCF31CZ-104X	C CAP.	0.1μF 16V Z
C0013	NCF31CZ-104X	C CAP.	0.1μF 16V Z
C0014	NDC31HJ-821X	C CAP.	820pF 50V J
C0017	NDC31HJ-330X	C CAP.	33pF 50V J
C0018	NDC31HJ-820X	C CAP.	82pF 50V J
C0019	NEH71CM-476X	E CAP.	47μF 16V M
C0020	NCF31CZ-104X	C CAP.	0.1μF 16V Z
C0021	NEH71CM-476X	E CAP.	47μF 16V M
C0023	NCB31EK-333X	C CAP.	0.033μF 25V K
C0024	NCF31CZ-104X	C CAP.	0.1μF 16V Z
C0025	NCB31EK-333X	C CAP.	0.033μF 25V K
C0026	NCF31CZ-104X	C CAP.	0.1μF 16V Z
C0027	NEH71CM-476X	E CAP.	47μF 16V M
C0028	NEH71CM-476X	E CAP.	47μF 16V M
C0029	NDC31HJ-151X	C CAP.	150pF 50V J
C0030	NCF31CZ-104X	C CAP.	0.1μF 16V Z
C0031	NCF31CZ-104X	C CAP.	0.1μF 16V Z
C0032	NCF31CZ-104X	C CAP.	0.1μF 16V Z
C0034	NCF31CZ-104X	C CAP.	0.1μF 16V Z
C0035	NCF31CZ-104X	C CAP.	0.1μF 16V Z
C0036	NCF31CZ-104X	C CAP.	0.1μF 16V Z
C0037	NCF31CZ-104X	C CAP.	0.1μF 16V Z
C0038	NCF31CZ-104X	C CAP.	0.1μF 16V Z
C0039	NCF31CZ-104X	C CAP.	0.1μF 16V Z
C0040	NDC31HJ-330X	C CAP.	33pF 50V J
C0041	NDC31HJ-270X	C CAP.	27pF 50V J

△ Symbol No.	Part No.	Part Name	Description
CAPACITOR			
C0042	NCF31CZ-104X	C CAP.	0.1μF 16V Z
C0043	NCF31CZ-104X	C CAP.	0.1μF 16V Z
C0045	NCF31CZ-104X	C CAP.	0.1μF 16V Z
C0046	NCF31CZ-104X	C CAP.	0.1μF 16V Z
C0047	NCF31CZ-104X	C CAP.	0.1μF 16V Z
C0048	NEH71CM-476X	E CAP.	47μF 16V M
C0049	NCF31CZ-104X	C CAP.	0.1μF 16V Z
C0050	NCF31CZ-104X	C CAP.	0.1μF 16V Z
C0051	NEH71CM-476X	E CAP.	47μF 16V M
C0052	NCF31CZ-104X	C CAP.	0.1μF 16V Z
C0053	NCF31CZ-104X	C CAP.	0.1μF 16V Z
C0054	NCF31CZ-104X	C CAP.	0.1μF 16V Z
C0055	NCF31CZ-104X	C CAP.	0.1μF 16V Z
C0056	NCF31CZ-104X	C CAP.	0.1μF 16V Z
C0057	NCF31CZ-104X	C CAP.	0.1μF 16V Z
C0059	NEH71CM-106X	E CAP.	10μF 16V M
C0060	NEH71CM-106X	E CAP.	10μF 16V M
C0061	NEH71CM-106X	E CAP.	10μF 16V M
C0062	NRSA63J-0R0X	MG R	0.0Ω 1/16W J
C0063	NDC31HJ-820X	C CAP.	82pF 50V J
C0064	NDC31HJ-820X	C CAP.	82pF 50V J
C0065	NDC31HJ-820X	C CAP.	82pF 50V J
C0070	NEH71HM-225X	E CAP.	2.2μF 50V M

COIL

L0001	NQL092K-4R7X	INDUCTOR	4.7μH
L0003	NQL092K-4R7X	INDUCTOR	4.7μH
L0005	NQL092K-4R7X	INDUCTOR	4.7μH
L0006	NQL092K-4R7X	INDUCTOR	4.7μH
L0007	NQL092K-4R7X	INDUCTOR	4.7μH
L0008	NQL092K-4R7X	INDUCTOR	4.7μH
L0009	NQL034K-4R7X	INDUCTOR	4.7μH
L0010	NQL092K-4R7X	INDUCTOR	4.7μH
L0011	NQL092K-4R7X	INDUCTOR	4.7μH
L0012	NQL092K-4R7X	INDUCTOR	4.7μH
L0013	NQL092K-4R7X	INDUCTOR	4.7μH
L0014	NQL092K-4R7X	INDUCTOR	4.7μH
L0015	NQL034K-4R7X	INDUCTOR	4.7μH
L0016	NQL034K-4R7X	INDUCTOR	4.7μH
L0017	NQL092K-1R5X	INDUCTOR	1.5μH
L0018	NQL092K-1R5X	INDUCTOR	1.5μH
L0019	NQL092K-1R5X	INDUCTOR	1.5μH
L0020	NQL092K-1R5X	INDUCTOR	1.5μH
L0021	NQL092K-1R5X	INDUCTOR	1.5μH
L0022	NQL092K-1R5X	INDUCTOR	1.5μH

DIODE

D0001	MA111-X	SI DIODE
D0005	MA3056/M/-X	ZENER DIODE
D0006	MA3056/M/-X	ZENER DIODE
D0007	MA3056/M/-X	ZENER DIODE
D0008	MA3056/M/-X	ZENER DIODE
D0010	MA3068/M/-X	ZENER DIODE

TRANSISTOR

Q0001	2SC2712/YG/-X	SI TRANSISTOR
Q0002	2SC2712/YG/-X	SI TRANSISTOR
Q0007	2SA1162/YG/-X	SI TRANSISTOR
Q0021	2SC2712/YG/-X	SI TRANSISTOR
Q0022	2SC2712/YG/-X	SI TRANSISTOR

IC

IC0001	SDA6000	IC	(SERVICE)
IC0002	MR27V3202FJMMAX	IC	
IC0003	K45641632F-TC75	IC (DIGITAL)	
IC0004	AT24WC32-29WZ	IC	
IC0005	S-80828CNNB-W	IC	
IC0901	TA48M025F-X	IC	
IC0902	TA48M033F-X	IC	
IC0903	MM1437AF-X	IC	

△ Symbol No.	Part No.	Part Name	Description
OTHERS			
CN0001	QGB1505K1-50	B TO B CONNE	
K0001	NRSA63J-390X	MG R	39Ω 1/16W J
K0002	NQR0389-003X	FERRITE BEADS	
K0003	NRSA63J-0R0X	MG R	0.0Ω 1/16W J
K0004	NQR0389-003X	FERRITE BEADS	
LC0001	NQR0313-007X	EMI FILTER	
LC0002	NQR0431-001X	EMI FILTER	
X0001	QAX0669-001Z	CRYSTAL	

HV-34LZ/EE

■ MICOM P.W. BOARD ASS'Y (SMF-0M704A)

Symbol No.	Part No.	Part Name	Description
------------	----------	-----------	-------------

RESISTOR

R0001	NRSA63J-102X	MG R	1kΩ 1/16W J
R0002	NRSA63J-104X	MG R	100kΩ 1/16W J
R0003	NRSA63J-102X	MG R	1kΩ 1/16W J
R0004	NRSA63J-102X	MG R	1kΩ 1/16W J
R0005	NRSA63J-102X	MG R	1kΩ 1/16W J
R0006	NRSA63J-393X	MG R	39kΩ 1/16W J
R0018	NRSA63J-102X	MG R	1kΩ 1/16W J
R0019	NRSA63J-102X	MG R	1kΩ 1/16W J
R0020	NRSA63J-102X	MG R	1kΩ 1/16W J
R0022	NRSA63J-472X	MG R	4.7kΩ 1/16W J
R0024	NRSA63J-472X	MG R	4.7kΩ 1/16W J
R0026	NRSA63J-472X	MG R	4.7kΩ 1/16W J
R0030	NRSA63J-472X	MG R	4.7kΩ 1/16W J
R0032	NRSA63J-472X	MG R	4.7kΩ 1/16W J
R0034	NRSA63J-0R0X	MG R	0.0Ω 1/16W J
R0035	NRSA63J-0R0X	MG R	0.0Ω 1/16W J
R0036	NRSA63J-0R0X	MG R	0.0Ω 1/16W J
R0037	NRSA63J-0R0X	MG R	0.0Ω 1/16W J
R0038	NRSA63J-0R0X	MG R	0.0Ω 1/16W J
R0039	NRSA63J-0R0X	MG R	0.0Ω 1/16W J
R0040	NRSA63J-0R0X	MG R	0.0Ω 1/16W J
R0041	NRSA63J-0R0X	MG R	0.0Ω 1/16W J
R0042	NRSA63J-0R0X	MG R	0.0Ω 1/16W J
R0043	NRSA63J-0R0X	MG R	0.0Ω 1/16W J
R0044	NRSA63J-0R0X	MG R	0.0Ω 1/16W J
R0045	NRSA63J-0R0X	MG R	0.0Ω 1/16W J
R0046	NRSA63J-0R0X	MG R	0.0Ω 1/16W J
R0047	NRSA63J-0R0X	MG R	0.0Ω 1/16W J
R0048	NRSA63J-0R0X	MG R	0.0Ω 1/16W J
R0049	NRSA63J-0R0X	MG R	0.0Ω 1/16W J
R0050	NRSA63J-0R0X	MG R	0.0Ω 1/16W J
R0051	NRSA63J-0R0X	MG R	0.0Ω 1/16W J
R0052	NRSA63J-0R0X	MG R	0.0Ω 1/16W J
R0053	NRSA63J-0R0X	MG R	0.0Ω 1/16W J
R0055	NRSA63J-0R0X	MG R	0.0Ω 1/16W J
R0057	NRSA63J-0R0X	MG R	0.0Ω 1/16W J
R0058	NRSA63J-0R0X	MG R	0.0Ω 1/16W J
R0059	NRSA63J-0R0X	MG R	0.0Ω 1/16W J
R0060	NRSA63J-0R0X	MG R	0.0Ω 1/16W J
R0061	NRSA63J-0R0X	MG R	0.0Ω 1/16W J
R0062	NRSA63J-0R0X	MG R	0.0Ω 1/16W J
R0063	NRSA63J-0R0X	MG R	0.0Ω 1/16W J
R0064	NRSA63J-0R0X	MG R	0.0Ω 1/16W J
R0065	NRSA63J-0R0X	MG R	0.0Ω 1/16W J
R0066	NRSA63J-0R0X	MG R	0.0Ω 1/16W J
R0067	NRSA63J-0R0X	MG R	0.0Ω 1/16W J
R0068	NRSA63J-0R0X	MG R	0.0Ω 1/16W J
R0069	NRSA63J-0R0X	MG R	0.0Ω 1/16W J
R0070	NRSA63J-0R0X	MG R	0.0Ω 1/16W J
R0071	NRSA63J-0R0X	MG R	0.0Ω 1/16W J
R0072	NRSA63J-0R0X	MG R	0.0Ω 1/16W J
R0073	NRSA63J-0R0X	MG R	0.0Ω 1/16W J
R0074	NRSA63J-0R0X	MG R	0.0Ω 1/16W J
R0075	NRSA63J-0R0X	MG R	0.0Ω 1/16W J
R0076	NRSA63J-0R0X	MG R	0.0Ω 1/16W J
R0077	NRSA63J-0R0X	MG R	0.0Ω 1/16W J
R0081	NCF31CZ-104X	C CAP.	0.1μF 16V Z
R0087	NRSA63J-221X	MG R	220Ω 1/16W J
R0089	NRSA63J-221X	MG R	220Ω 1/16W J
R0090	NRSA63J-221X	MG R	220Ω 1/16W J
R0091	NRSA63J-221X	MG R	220Ω 1/16W J
R0092	NRSA63J-472X	MG R	4.7kΩ 1/16W J
R0093	NRSA63J-221X	MG R	220Ω 1/16W J
R0094	NRSA63J-472X	MG R	4.7kΩ 1/16W J
R0095	NRSA63J-473X	MG R	47kΩ 1/16W J
R0096	NRSA63J-221X	MG R	220Ω 1/16W J
R0097	NRSA63J-102X	MG R	1kΩ 1/16W J
R0098	NRSA63J-0R0X	MG R	0.0Ω 1/16W J
R0107	NRSA63J-102X	MG R	1kΩ 1/16W J
R0108	NRSA63J-0R0X	MG R	0.0Ω 1/16W J
R0109	NRSA63J-0R0X	MG R	0.0Ω 1/16W J
R0110	NRSA63J-102X	MG R	1kΩ 1/16W J
R0111	NRSA63J-103X	MG R	10kΩ 1/16W J
R0112	NRSA63J-102X	MG R	1kΩ 1/16W J
R0113	NRSA63J-103X	MG R	10kΩ 1/16W J
R0114	NRSA63J-103X	MG R	10kΩ 1/16W J

Symbol No.	Part No.	Part Name	Description
------------	----------	-----------	-------------

RESISTOR

R0119	NRSA63J-563X	MG R	56kΩ 1/16W J
R0120	NRSA63J-332X	MG R	3.3kΩ 1/16W J
R0121	NRSA63J-182X	MG R	1.8kΩ 1/16W J
R0122	NRSA63J-103X	MG R	10kΩ 1/16W J
R0123	NRSA63J-682X	MG R	6.8kΩ 1/16W J
R0124	NRSA63J-101X	MG R	100Ω 1/16W J
R0125	NRSA63J-472X	MG R	4.7kΩ 1/16W J
R0126	NRSA63J-472X	MG R	4.7kΩ 1/16W J
R0127	NRSA63J-472X	MG R	4.7kΩ 1/16W J
R0128	NRSA63J-472X	MG R	4.7kΩ 1/16W J
R0129	NRSA63J-823X	MG R	82kΩ 1/16W J
R0130	NRSA63J-104X	MG R	100kΩ 1/16W J
R0131	NRSA63J-823X	MG R	82kΩ 1/16W J
R0132	NRSA63J-104X	MG R	100kΩ 1/16W J
R0133	NRSA63J-0R0X	MG R	0.0Ω 1/16W J
R0135	NRSA63J-102X	MG R	1kΩ 1/16W J
R0136	NRSA63J-103X	MG R	10kΩ 1/16W J
R0137	NRSA63J-222X	MG R	2.2kΩ 1/16W J
R0138	NRSA63J-222X	MG R	2.2kΩ 1/16W J
R0139	NRSA63J-222X	MG R	2.2kΩ 1/16W J
R0140	NRSA63J-103X	MG R	10kΩ 1/16W J
R0144	NRSA63J-103X	MG R	10kΩ 1/16W J
R0147	NRSA63J-472X	MG R	4.7kΩ 1/16W J
R0148	NRSA63J-472X	MG R	4.7kΩ 1/16W J
R0149	NRSA63J-472X	MG R	4.7kΩ 1/16W J
R0151	NRSA63J-183X	MG R	18kΩ 1/16W J
R0152	NRSA63J-221X	MG R	220Ω 1/16W J
R0153	NRSA63J-221X	MG R	220Ω 1/16W J
R0154	NRSA63J-221X	MG R	220Ω 1/16W J
R0155	NRSA63J-101X	MG R	100Ω 1/16W J
R0156	NRSA63J-101X	MG R	100Ω 1/16W J
R0158	NRSA63J-221X	MG R	220Ω 1/16W J
R0161	NRSA63J-102X	MG R	1kΩ 1/16W J
R0162	NRSA63J-153X	MG R	15kΩ 1/16W J
R0163	NRSA63J-682X	MG R	6.8kΩ 1/16W J
R0165	NRSA63J-103X	MG R	10kΩ 1/16W J
R0166	NRSA63J-223X	MG R	22kΩ 1/16W J
R0167	NRSA63J-103X	MG R	10kΩ 1/16W J
R0168	NRSA63J-471X	MG R	470Ω 1/16W J

CAPACITOR

C0001	QETN0JM-477Z	E CAP.	470μF 6.3V M
C0002	NCF31CZ-104X	C CAP.	0.1μF 16V Z
C0003	NCB11CK-225X	C CAP.	2.2μF 16V K
C0004	QETN0JM-108Z	E CAP.	1000μF 6.3V M
C0005	NCB11CK-225X	C CAP.	2.2μF 16V K
C0006	NCB11CK-225X	C CAP.	2.2μF 16V K
C0007	NEH71CM-476X	E CAP.	47μF 16V M
C0008	NCB11CK-225X	C CAP.	2.2μF 16V K
C0012	NCF31CZ-104X	C CAP.	0.1μF 16V Z
C0013	NCF31CZ-104X	C CAP.	0.1μF 16V Z
C0014	NDC31HJ-821X	C CAP.	820pF 50V J
C0017	NDC31HJ-330X	C CAP.	33pF 50V J
C0018	NDC31HJ-820X	C CAP.	82pF 50V J
C0019	NEH71CM-476X	E CAP.	47μF 16V M
C0020	NCF31CZ-104X	C CAP.	0.1μF 16V Z
C0021	NEH71CM-476X	E CAP.	47μF 16V M
C0023	NCB31EK-333X	C CAP.	0.033μF 25V K
C0024	NCF31CZ-104X	C CAP.	0.1μF 16V Z
C0025	NCB31EK-333X	C CAP.	0.033μF 25V K
C0026	NCF31CZ-104X	C CAP.	0.1μF 16V Z
C0027	NEH71CM-476X	E CAP.	47μF 16V M
C0028	NEH71CM-476X	E CAP.	47μF 16V M
C0029	NDC31HJ-151X	C CAP.	150pF 50V J
C0030	NCF31CZ-104X	C CAP.	0.1μF 16V Z
C0031	NCF31CZ-104X	C CAP.	0.1μF 16V Z
C0032	NCF31CZ-104X	C CAP.	0.1μF 16V Z
C0034	NCF31CZ-104X	C CAP.	0.1μF 16V Z
C0035	NCF31CZ-104X	C CAP.	0.1μF 16V Z
C0036	NCF31CZ-104X	C CAP.	0.1μF 16V Z
C0037	NCF31CZ-104X	C CAP.	0.1μF 16V Z
C0038	NCF31CZ-104X	C CAP.	0.1μF 16V Z
C0039	NCF31CZ-104X	C CAP.	0.1μF 16V Z
C0040	NDC31HJ-330X	C CAP.	33pF 50V J
C0041	NDC31HJ-270X	C CAP.	27pF 50V J

△ Symbol No.	Part No.	Part Name	Description
CAPACITOR			
C0042	NCF31CZ-104X	C CAP.	0.1μF 16V Z
C0043	NCF31CZ-104X	C CAP.	0.1μF 16V Z
C0045	NCF31CZ-104X	C CAP.	0.1μF 16V Z
C0046	NCF31CZ-104X	C CAP.	0.1μF 16V Z
C0047	NCF31CZ-104X	C CAP.	0.1μF 16V Z
C0048	NEH71CM-476X	E CAP.	47μF 16V M
C0049	NCF31CZ-104X	C CAP.	0.1μF 16V Z
C0050	NCF31CZ-104X	C CAP.	0.1μF 16V Z
C0051	NEH71CM-476X	E CAP.	47μF 16V M
C0052	NCF31CZ-104X	C CAP.	0.1μF 16V Z
C0053	NCF31CZ-104X	C CAP.	0.1μF 16V Z
C0054	NCF31CZ-104X	C CAP.	0.1μF 16V Z
C0055	NCF31CZ-104X	C CAP.	0.1μF 16V Z
C0056	NCF31CZ-104X	C CAP.	0.1μF 16V Z
C0057	NCF31CZ-104X	C CAP.	0.1μF 16V Z
C0059	NEH71CM-106X	E CAP.	10μF 16V M
C0060	NEH71CM-106X	E CAP.	10μF 16V M
C0061	NEH71CM-106X	E CAP.	10μF 16V M
C0062	NRSA63J-0R0X	MG R	0.0Ω 1/16W J
C0063	NDC31HJ-820X	C CAP.	82pF 50V J
C0064	NDC31HJ-820X	C CAP.	82pF 50V J
C0065	NDC31HJ-820X	C CAP.	82pF 50V J
C0070	NEH71HM-225X	E CAP.	2.2μF 50V M

COIL

L0001	NQL092K-4R7X	INDUCTOR	4.7μH
L0003	NQL092K-4R7X	INDUCTOR	4.7μH
L0005	NQL092K-4R7X	INDUCTOR	4.7μH
L0006	NQL092K-4R7X	INDUCTOR	4.7μH
L0007	NQL092K-4R7X	INDUCTOR	4.7μH
L0008	NQL092K-4R7X	INDUCTOR	4.7μH
L0009	NQL034K-4R7X	INDUCTOR	4.7μH
L0010	NQL092K-4R7X	INDUCTOR	4.7μH
L0011	NQL092K-4R7X	INDUCTOR	4.7μH
L0012	NQL092K-4R7X	INDUCTOR	4.7μH
L0013	NQL092K-4R7X	INDUCTOR	4.7μH
L0014	NQL092K-4R7X	INDUCTOR	4.7μH
L0015	NQL034K-4R7X	INDUCTOR	4.7μH
L0016	NQL034K-4R7X	INDUCTOR	4.7μH
L0017	NQL092K-1R5X	INDUCTOR	1.5μH
L0018	NQL092K-1R5X	INDUCTOR	1.5μH
L0019	NQL092K-1R5X	INDUCTOR	1.5μH
L0020	NQL092K-1R5X	INDUCTOR	1.5μH
L0021	NQL092K-1R5X	INDUCTOR	1.5μH
L0022	NQL092K-1R5X	INDUCTOR	1.5μH

DIODE

D0001	MA111-X	SI DIODE
D0005	MA3056/M/-X	ZENER DIODE
D0006	MA3056/M/-X	ZENER DIODE
D0007	MA3056/M/-X	ZENER DIODE
D0008	MA3056/M/-X	ZENER DIODE
D0010	MA3068/M/-X	ZENER DIODE

TRANSISTOR

Q0001	2SC2712/YG/-X	SI TRANSISTOR
Q0002	2SC2712/YG/-X	SI TRANSISTOR
Q0007	2SA1162/YG/-X	SI TRANSISTOR
Q0021	2SC2712/YG/-X	SI TRANSISTOR
Q0022	2SC2712/YG/-X	SI TRANSISTOR

IC

IC0001	SDA6000	IC	(SERVICE)
IC0002	MR27V3202FJMMAX	IC	
IC0003	K45641632F-TC75	IC (DIGITAL)	
IC0004	AT24WC32-29WZ	IC	
IC0005	S-80828CNNB-W	IC	
IC0901	TA48M025F-X	IC	
IC0902	TA48M033F-X	IC	
IC0903	MM1437AF-X	IC	

△ Symbol No.	Part No.	Part Name	Description
OTHERS			
CN0001	QGB1505K1-50	B TO B CONNE	
K0001	NRSA63J-390X	MG R	39Ω 1/16W J
K0002	NQR0389-003X	FERRITE BEADS	
K0003	NRSA63J-0R0X	MG R	0.0Ω 1/16W J
K0004	NQR0389-003X	FERRITE BEADS	
LC0001	NQR0313-007X	EMI FILTER	
LC0002	NQR0431-001X	EMI FILTER	
X0001	QAX0669-001Z	CRYSTAL	

■ AV SW P.W. BOARD ASS'Y (SMF-0S701A)

Symbol No.	Part No.	Part Name	Description
RESISTOR			
R0101	NRSA63J-750X	MG R	75Ω 1/16W J
R0102	NRSA63J-333X	MG R	33kΩ 1/16W J
R0103	NRSA63J-750X	MG R	75Ω 1/16W J
R0104	NRSA63J-750X	MG R	75Ω 1/16W J
R0105	NRSA63J-222X	MG R	2.2kΩ 1/16W J
R0106	NRSA63J-222X	MG R	2.2kΩ 1/16W J
R0107	NRSA63J-101X	MG R	100Ω 1/16W J
R0108	NRSA63J-333X	MG R	33kΩ 1/16W J
R0109	NRSA63J-101X	MG R	100Ω 1/16W J
R0110	NRSA63J-333X	MG R	33kΩ 1/16W J
R0111	NRSA63J-101X	MG R	100Ω 1/16W J
R0112	NRSA63J-101X	MG R	100Ω 1/16W J
R0113	NRSA63J-101X	MG R	100Ω 1/16W J
R0114	NRSA63J-750X	MG R	75Ω 1/16W J
R0115	NRSA63J-223X	MG R	22kΩ 1/16W J
R0116	NRSA63J-750X	MG R	75Ω 1/16W J
R0117	NRSA63J-223X	MG R	22kΩ 1/16W J
R0118	NRSA63J-750X	MG R	75Ω 1/16W J
R0119	NRSA63J-750X	MG R	75Ω 1/16W J
R0120	NRSA63J-823X	MG R	82kΩ 1/16W J
R0121	NRSA63J-823X	MG R	82kΩ 1/16W J
R0122	NRSA63J-471X	MG R	470Ω 1/16W J
R0123	NRSA63J-223X	MG R	22kΩ 1/16W J
R0124	NRSA63J-153X	MG R	15kΩ 1/16W J
R0125	NRSA63J-222X	MG R	2.2kΩ 1/16W J
R0126	NRSA63J-391X	MG R	390Ω 1/16W J
R0127	NRSA63J-391X	MG R	390Ω 1/16W J
R0128	NRSA63J-104X	MG R	100kΩ 1/16W J
R0129	NRSA63J-222X	MG R	2.2kΩ 1/16W J
R0130	NRSA63J-222X	MG R	2.2kΩ 1/16W J
R0131	NRSA63J-333X	MG R	33kΩ 1/16W J
R0132	NRSA63J-223X	MG R	22kΩ 1/16W J
R0133	NRSA63J-153X	MG R	15kΩ 1/16W J
R0134	NRSA63J-222X	MG R	2.2kΩ 1/16W J
R0135	NRSA63J-333X	MG R	33kΩ 1/16W J
R0136	NRSA63J-222X	MG R	2.2kΩ 1/16W J
R0137	NRSA63J-333X	MG R	33kΩ 1/16W J
R0138	NRSA63J-222X	MG R	2.2kΩ 1/16W J
R0139	NRSA63J-333X	MG R	33kΩ 1/16W J
R0140	NRSA63J-562X	MG R	5.6kΩ 1/16W J
R0141	NRSA63J-102X	MG R	1kΩ 1/16W J
R0142	NRSA63J-102X	MG R	1kΩ 1/16W J
R0143	NRSA63J-101X	MG R	100Ω 1/16W J
R0144	NRSA63J-101X	MG R	100Ω 1/16W J
R0145	NRSA63J-101X	MG R	100Ω 1/16W J
R0146	NRSA63J-101X	MG R	100Ω 1/16W J
R0147	NRSA63J-101X	MG R	100Ω 1/16W J
R0148	NRSA63J-101X	MG R	100Ω 1/16W J
R0149	NRSA63J-101X	MG R	100Ω 1/16W J
R0150	NRSA63J-750X	MG R	75Ω 1/16W J
R0151	NRSA63J-222X	MG R	2.2kΩ 1/16W J
R0152	NRSA63J-333X	MG R	33kΩ 1/16W J
R0153	NRSA63J-750X	MG R	75Ω 1/16W J
R0154	NRSA63J-222X	MG R	2.2kΩ 1/16W J
R0155	NRSA63J-333X	MG R	33kΩ 1/16W J
R0156	NRSA63J-750X	MG R	75Ω 1/16W J
R0157	NRSA63J-562X	MG R	5.6kΩ 1/16W J
R0161	NRSA63J-101X	MG R	100Ω 1/16W J
R0162	NRSA63J-101X	MG R	100Ω 1/16W J
R0163	NRSA63J-101X	MG R	100Ω 1/16W J
R0164	NRSA63J-101X	MG R	100Ω 1/16W J
R0165	NRSA63J-101X	MG R	100Ω 1/16W J
R0166	NRSA63J-101X	MG R	100Ω 1/16W J
R0167	NRSA63J-222X	MG R	2.2kΩ 1/16W J
R0168	NRSA63J-101X	MG R	100Ω 1/16W J
R0169	NRSA63J-333X	MG R	33kΩ 1/16W J
R0170	NRSA63J-221X	MG R	220Ω 1/16W J
R0171	NRSA63J-221X	MG R	220Ω 1/16W J
R0172	NRSA63J-750X	MG R	75Ω 1/16W J
R0173	QRK126J-151X	C R	150Ω 1/2W J
R0174	NRSA63J-101X	MG R	100Ω 1/16W J
R0179	NRSA63J-181X	MG R	180Ω 1/16W J
R0181	NRSA63J-182X	MG R	1.8kΩ 1/16W J
R0183	QRE141J-562Y	C R	5.6kΩ 1/4W J

CAPACITOR

C0101	NCB31HK-152X	C CAP.	1500pF	50V	K
C0102	NCB31HK-152X	C CAP.	1500pF	50V	K

Symbol No.	Part No.	Part Name	Description
CAPACITOR			
C0103	QETN1HM-106Z	E CAP.	10μF 50V M
C0104	QETN1HM-105Z	E CAP.	1μF 50V M
C0105	QETN1HM-106Z	E CAP.	10μF 50V M
C0106	QETN1HM-105Z	E CAP.	1μF 50V M
C0107	NCB31HK-103X	C CAP.	0.01μF 50V K
C0108	NCB31HK-152X	C CAP.	1500pF 50V K
C0109	NCB31HK-152X	C CAP.	1500pF 50V K
C0110	QETN1HM-106Z	E CAP.	10μF 50V M
C0111	NCB31HK-152X	C CAP.	1500pF 50V K
C0112	NCB31HK-152X	C CAP.	1500pF 50V K
C0113	QETN1AM-108Z	E CAP.	1000μF 10V M
C0114	NCB31HK-472X	C CAP.	4700pF 50V K
C0115	NCB31HK-472X	C CAP.	4700pF 50V K
C0116	QETN1HM-106Z	E CAP.	10μF 50V M
C0117	QETN1HM-106Z	E CAP.	10μF 50V M
C0118	QETN1HM-106Z	E CAP.	10μF 50V M
C0119	QETN1HM-106Z	E CAP.	10μF 50V M
C0120	QETN1HM-106Z	E CAP.	10μF 50V M
C0121	QETN1HM-105Z	E CAP.	1μF 50V M
C0122	QETN1HM-105Z	E CAP.	1μF 50V M
C0123	QENC1EM-106Z	BP E CAP.	10μF 25V M
C0124	QETN1HM-105Z	E CAP.	1μF 50V M
C0125	QETN1HM-105Z	E CAP.	1μF 50V M
C0126	QENC1HM-105Z	E CAP.	1μF 50V M
C0127	QENC1EM-106Z	BP E CAP.	10μF 25V M
C0128	NCB31HK-103X	C CAP.	0.01μF 50V K
C0129	NCB31HK-103X	C CAP.	0.01μF 50V K
C0130	NCB31HK-103X	C CAP.	0.01μF 50V K
C0131	NCB31HK-103X	C CAP.	0.01μF 50V K
C0132	QETN1HM-106Z	E CAP.	10μF 50V M
C0133	QETN1HM-105Z	E CAP.	1μF 50V M
C0134	QETN1HM-106Z	E CAP.	10μF 50V M
C0135	QETN1HM-105Z	E CAP.	1μF 50V M
C0136	NCB31HK-103X	C CAP.	0.01μF 50V K
C0137	QENC1HM-105Z	E CAP.	1μF 50V M
C0141	QETN1CM-477Z	E CAP.	470μF 16V M
C0142	NCB31HK-103X	C CAP.	0.01μF 50V K
C0143	QETN1HM-106Z	E CAP.	10μF 50V M
C0144	QENC1EM-106Z	BP E CAP.	10μF 25V M
C0145	QETN1CM-107Z	E CAP.	100μF 16V M
C0146	NCB31HK-103X	C CAP.	0.01μF 50V K
C0147	NCB31HK-103X	C CAP.	0.01μF 50V K
C0148	NCB31HK-103X	C CAP.	0.01μF 50V K
C0149	NCB31HK-103X	C CAP.	0.01μF 50V K
C0156	QENC1HM-105Z	E CAP.	1μF 50V M
C0157	QETN1HM-106Z	E CAP.	10μF 50V M

DIODE

D0104	MA3120/M/-X	ZENER DIODE
D0105	MA3120/M/-X	ZENER DIODE
D0106	MA3120/M/-X	ZENER DIODE
D0107	MA3120/M/-X	ZENER DIODE
D0108	MA3120/M/-X	ZENER DIODE
D0109	MA3120/M/-X	ZENER DIODE
D0110	MA3056/M/-X	ZENER DIODE

TRANSISTOR

Q0101	DTC323TK-X	DIGI TRANSISTOR
Q0102	2SC2412K/QR/-X	SI TRANSISTOR
Q0103	2SC2412K/QR/-X	SI TRANSISTOR
Q0104	2SA1037AK/QR/-X	SI TRANSISTOR
Q0105	DTC323TK-X	DIGI TRANSISTOR
Q0106	2SC2412K/QR/-X	SI TRANSISTOR
Q0107	2SC2412K/QR/-X	SI TRANSISTOR
Q0110	2SC1740S/QR/-T	SI TRANSISTOR
Q0113	2SC2412K/QR/-X	SI TRANSISTOR

IC

IC0101	CXA2069Q	IC
--------	----------	----

OTHERS

CN0001	QGB1505K1-50	B TO B CONNE
J0101	QN20454-001	AV JACK
J0102	QNN0349-001	PIN JACK
J0103	QNN0349-002	PIN JACK
J0104	QNN0348-001	PIN JACK
J0105	QNN0349-001	PIN JACK
J0106	QNS0001-001	JACK

100Hz P.W. BOARD ASS'Y (SMF-0Z701A)

Symbol No.	Part No.	Part Name	Description
RESISTOR			
R0008	NRSA63J-0R0X	MG R	0.0Ω 1/16W J
R0009	NRSA63J-0R0X	MG R	0.0Ω 1/16W J
R0010	NRSA63J-101X	MG R	100Ω 1/16W J
R0011	NRSA63J-101X	MG R	100Ω 1/16W J
R0012	NRSA63J-101X	MG R	100Ω 1/16W J
R0101	NRSA63J-332X	MG R	3.3kΩ 1/16W J
R0102	NRSA63J-222X	MG R	2.2kΩ 1/16W J
R0103	NRSA63J-222X	MG R	2.2kΩ 1/16W J
R0104	NRSA63J-332X	MG R	3.3kΩ 1/16W J
R0105	NRSA63J-222X	MG R	2.2kΩ 1/16W J
R0106	NRSA63J-222X	MG R	2.2kΩ 1/16W J
R0107	NRSA63J-750X	MG R	75Ω 1/16W J
R0111	NRSA63J-750X	MG R	75Ω 1/16W J
R0112	NRSA63J-750X	MG R	75Ω 1/16W J
R0113	NRSA63J-750X	MG R	75Ω 1/16W J
R0117	NRSA63J-0R0X	MG R	0.0Ω 1/16W J
R0118	NRSA63J-0R0X	MG R	0.0Ω 1/16W J
R0119	NRSA63J-0R0X	MG R	0.0Ω 1/16W J
R0122	NRSA63J-0R0X	MG R	0.0Ω 1/16W J
R0123	NRSA63J-0R0X	MG R	0.0Ω 1/16W J
R0124	NRSA63J-101X	MG R	100Ω 1/16W J
R0125	NRSA63J-101X	MG R	100Ω 1/16W J
R0132	NRSA63J-100X	MG R	10Ω 1/16W J
R0133	NRSA63J-100X	MG R	10Ω 1/16W J
R0134	NRSA63J-100X	MG R	10Ω 1/16W J
R0135	NRSA63J-100X	MG R	10Ω 1/16W J
R0136	NRSA63J-100X	MG R	10Ω 1/16W J
R0137	NRSA63J-100X	MG R	10Ω 1/16W J
R0138	NRSA63J-100X	MG R	10Ω 1/16W J
R0139	NRSA63J-100X	MG R	10Ω 1/16W J
R0141	NRSA63J-100X	MG R	10Ω 1/16W J
R0201	NRSA63J-121X	MG R	120Ω 1/16W J
R0202	NRSA63J-101X	MG R	100Ω 1/16W J
R0203	NRSA63J-101X	MG R	100Ω 1/16W J
R0204	NRSA63J-0R0X	MG R	0.0Ω 1/16W J
R0205	NRSA63J-0R0X	MG R	0.0Ω 1/16W J
R0214	NRSA63J-0R0X	MG R	0.0Ω 1/16W J
R0217	NRSA63J-103X	MG R	10kΩ 1/16W J
R0218	NRSA63J-333X	MG R	33kΩ 1/16W J
R0219	NRSA63J-103X	MG R	10kΩ 1/16W J
R0220	NRSA63J-822X	MG R	8.2kΩ 1/16W J
R0251	NRSA63J-222X	MG R	2.2kΩ 1/16W J
R0252	NRSA63J-151X	MG R	150Ω 1/16W J
R0254	NRSA63J-391X	MG R	390Ω 1/16W J
R0255	NRSA63J-221X	MG R	220Ω 1/16W J
R0256	NRSA63J-221X	MG R	220Ω 1/16W J
R0257	NRSA63J-271X	MG R	270Ω 1/16W J
R0258	NRSA63J-222X	MG R	2.2kΩ 1/16W J
R0259	NRSA63J-472X	MG R	4.7kΩ 1/16W J
R0261	NRSA63J-222X	MG R	2.2kΩ 1/16W J
R0264	NRSA63J-391X	MG R	390Ω 1/16W J
R0271	NRSA63J-222X	MG R	2.2kΩ 1/16W J
R0274	NRSA63J-391X	MG R	390Ω 1/16W J
R0293	NRSA63J-102X	MG R	1kΩ 1/16W J
R0301	NRSA63J-104X	MG R	100kΩ 1/16W J
R0302	NRSA63J-104X	MG R	100kΩ 1/16W J
R0303	NRSA63J-104X	MG R	100kΩ 1/16W J
R0304	NRSA63J-101X	MG R	100Ω 1/16W J
R0305	NRSA63J-101X	MG R	100Ω 1/16W J
R0306	NRSA63J-152X	MG R	1.5kΩ 1/16W J
R0307	NRSA63J-152X	MG R	1.5kΩ 1/16W J
R0308	NRSA63J-152X	MG R	1.5kΩ 1/16W J
R0401	NRSA63J-473X	MG R	47kΩ 1/16W J
R0402	NRSA63J-472X	MG R	4.7kΩ 1/16W J
R0404	NRSA63J-0R0X	MG R	0.0Ω 1/16W J
R0407	NRSA63J-0R0X	MG R	0.0Ω 1/16W J
R0409	NRSA63J-0R0X	MG R	0.0Ω 1/16W J

CAPACITOR

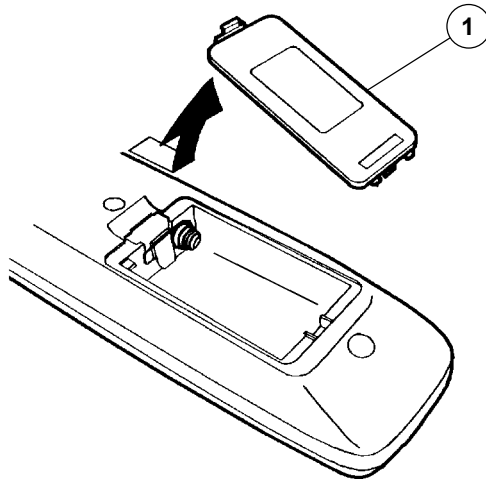
C0001	NCB31CK-104X	C CAP.	0.1μF 16V K
C0002	NEH71CM-476X	E CAP.	47μF 16V M
C0003	NCB31CK-104X	C CAP.	0.1μF 16V K
C0004	NEH71CM-476X	E CAP.	47μF 16V M
C0005	NCB31CK-104X	C CAP.	0.1μF 16V K
C0006	NEH71CM-476X	E CAP.	47μF 16V M
C0007	NDC31HJ-4R0X	C CAP.	4.0pF 50V J

Symbol No.	Part No.	Part Name	Description
CAPACITOR			
C0008	NDC31HJ-4R0X	C CAP.	4.0pF 50V J
C0009	NDC31HJ-4R0X	C CAP.	4.0pF 50V J
C0101	NEH71CM-106X	E CAP.	10μF 16V M
C0102	NCB31EK-473X	C CAP.	0.047μF 25V K
C0103	NEH71CM-476X	E CAP.	47μF 16V M
C0104	NCB31HK-152X	C CAP.	1500pF 50V K
C0105	NDC31HJ-102X	C CAP.	1000pF 50V J
C0106	NCB31CK-104X	C CAP.	0.1μF 16V K
C0107	NCF31CZ-224X	C CAP.	0.22μF 16V Z
C0108	NCB31HK-152X	C CAP.	1500pF 50V K
C0109	NDC31HJ-391X	C CAP.	390pF 50V J
C0110	NEH71CM-106X	E CAP.	10μF 16V M
C0111	NCB31EK-473X	C CAP.	0.047μF 25V K
C0112	NDC31HJ-331X	C CAP.	330pF 50V J
C0116	NCF31CZ-224X	C CAP.	0.22μF 16V Z
C0117	NCF31CZ-224X	C CAP.	0.22μF 16V Z
C0118	NCF31CZ-224X	C CAP.	0.22μF 16V Z
C0122	NDC31HJ-331X	C CAP.	330pF 50V J
C0123	NDC31HJ-331X	C CAP.	330pF 50V J
C0124	NDC31HJ-331X	C CAP.	330pF 50V J
C0125	NDC31HJ-3R0X	C CAP.	3.0pF 50V J
C0126	NDC31HJ-3R0X	C CAP.	3.0pF 50V J
C0128	NCB31CK-104X	C CAP.	0.1μF 16V K
C0129	NCF31CZ-224X	C CAP.	0.22μF 16V Z
C0130	NDC31HJ-391X	C CAP.	390pF 50V J
C0131	NCB31HK-152X	C CAP.	1500pF 50V K
C0132	NCB31EK-473X	C CAP.	0.047μF 25V K
C0133	NCB31HK-152X	C CAP.	1500pF 50V K
C0134	NCB31CK-683X	C CAP.	0.068μF 16V K
C0136	NCB31CK-683X	C CAP.	0.068μF 16V K
C0137	NCB31CK-683X	C CAP.	0.068μF 16V K
C0138	NCB31HK-152X	C CAP.	1500pF 50V K
C0139	NCB31EK-473X	C CAP.	0.047μF 25V K
C0140	NEH71CM-476X	E CAP.	47μF 16V M
C0141	NDC31HJ-100X	C CAP.	10pF 50V J
C0201	NEH71CM-476X	E CAP.	47μF 16V M
C0202	NCB31CK-104X	C CAP.	0.1μF 16V K
C0203	NCB31CK-104X	C CAP.	0.1μF 16V K
C0204	NCB31CK-104X	C CAP.	0.1μF 16V K
C0205	NCB31CK-104X	C CAP.	0.1μF 16V K
C0206	NEH71CM-476X	E CAP.	47μF 16V M
C0207	NCB31CK-104X	C CAP.	0.1μF 16V K
C0208	NCB31CK-104X	C CAP.	0.1μF 16V K
C0209	NCB31CK-104X	C CAP.	0.1μF 16V K
C0210	NCB31CK-104X	C CAP.	0.1μF 16V K
C0211	NCB31CK-104X	C CAP.	0.1μF 16V K
C0212	NDC31HJ-180X	C CAP.	18pF 50V J
C0213	NDC31HJ-180X	C CAP.	18pF 50V J
C0214	NCB31CK-104X	C CAP.	0.1μF 16V K
C0215	NCB31CK-104X	C CAP.	0.1μF 16V K
C0216	NCB31CK-104X	C CAP.	0.1μF 16V K
C0217	NCB31CK-104X	C CAP.	0.1μF 16V K
C0218	NDC31HJ-561X	C CAP.	560pF 50V J
C0219	NEH71CM-476X	E CAP.	47μF 16V M
C0220	NCB31CK-104X	C CAP.	0.1μF 16V K
C0221	NCB31CK-104X	C CAP.	0.1μF 16V K
C0222	NCB31CK-104X	C CAP.	0.1μF 16V K
C0223	NCB31CK-104X	C CAP.	0.1μF 16V K
C0224	NCB31CK-104X	C CAP.	0.1μF 16V K
C0225	NCB31CK-104X	C CAP.	0.1μF 16V K
C0226	NCB31CK-104X	C CAP.	0.1μF 16V K
C0227	NCB31CK-104X	C CAP.	0.1μF 16V K
C0228	NCB31CK-104X	C CAP.	0.1μF 16V K
C0229	NCB31CK-104X	C CAP.	0.1μF 16V K
C0231	NCB31CK-104X	C CAP.	0.1μF 16V K
C0237	NEH71CM-106X	E CAP.	10μF 16V M
C0238	NEH71CM-106X	E CAP.	10μF 16V M
C0251	NDC31HJ-4R0X	C CAP.	4.0pF 50V J
C0252	NCB31CK-104X	C CAP.	0.1μF 16V K
C0253	NCB31CK-104X	C CAP.	0.1μF 16V K
C0254	NDC31HJ-120X	C CAP.	12pF 50V J
C0255	NDC31HJ-270X	C CAP.	27pF 50V J
C0256	NEH71CM-106X	E CAP.	10μF 16V M
C0261	NDC31HJ-4R0X	C CAP.	4.0pF 50V J
C0262	NCB31CK-104X	C CAP.	0.1μF 16V K
C0263	NCB31CK-104X	C CAP.	0.1μF 16V K
C0264	NDC31HJ-120X	C CAP.	12pF 50V J
C0265	NDC31HJ-270X	C CAP.	27pF 50V J
C0271	NDC31HJ-4R0X	C CAP.	4.0pF 50V J
C0272	NCB31CK-104X	C CAP.	0.1μF 16V K

Symbol No.	Part No.	Part Name	Description
CAPACITOR			
C0273	NCB31CK-104X	C CAP.	0.1μF 16V K
C0274	NDC31HJ-120X	C CAP.	12pF 50V J
C0275	NDC31HJ-270X	C CAP.	27pF 50V J
C0281	NCF31AZ-105X	C CAP.	1μF 10V Z
C0282	NEH71CM-476X	E CAP.	47μF 16V M
C0283	NCB31CK-104X	C CAP.	0.1μF 16V K
C0284	NCB31CK-104X	C CAP.	0.1μF 16V K
C0285	NCB31CK-104X	C CAP.	0.1μF 16V K
C0286	NEH71CM-106X	E CAP.	10μF 16V M
C0301	NEH71CM-476X	E CAP.	47μF 16V M
C0302	NCB31CK-104X	C CAP.	0.1μF 16V K
C0303	NCB31CK-104X	C CAP.	0.1μF 16V K
C0402	NCB31CK-104X	C CAP.	0.1μF 16V K
C0403	NCB31CK-104X	C CAP.	0.1μF 16V K
C0404	NDC31HJ-330X	C CAP.	33pF 50V J
COIL			
L0001	NQL092K-1R5X	INDUCTOR	1.5μH
L0002	NQL092K-1R5X	INDUCTOR	1.5μH
L0003	NQL092K-1R5X	INDUCTOR	1.5μH
L0101	NQL034K-150X	INDUCTOR	15μH
L0102	NQL092K-3R3X	INDUCTOR	3.3μH
L0106	NQL092K-3R3X	INDUCTOR	3.3μH
L0107	NQL092K-3R3X	INDUCTOR	3.3μH
L0108	NQL092K-3R3X	INDUCTOR	3.3μH
L0109	NQL034K-6R8X	INDUCTOR	6.8μH
L0201	NQL034K-100X	INDUCTOR	10μH
L0202	NQL034K-100X	INDUCTOR	10μH
L0203	NQL034K-100X	INDUCTOR	10μH
L0204	NQL034K-100X	INDUCTOR	10μH
L0205	NQL034K-100X	INDUCTOR	10μH
L0209	NQL092K-1R5X	INDUCTOR	1.5μH
L0210	NQL092K-1R5X	INDUCTOR	1.5μH
L0211	NQR0413-003X	BEADS CORE	
L0251	NQL092K-5R6X	INDUCTOR	5.6μH
L0261	NQL092K-5R6X	INDUCTOR	5.6μH
L0271	NQL092K-5R6X	INDUCTOR	5.6μH

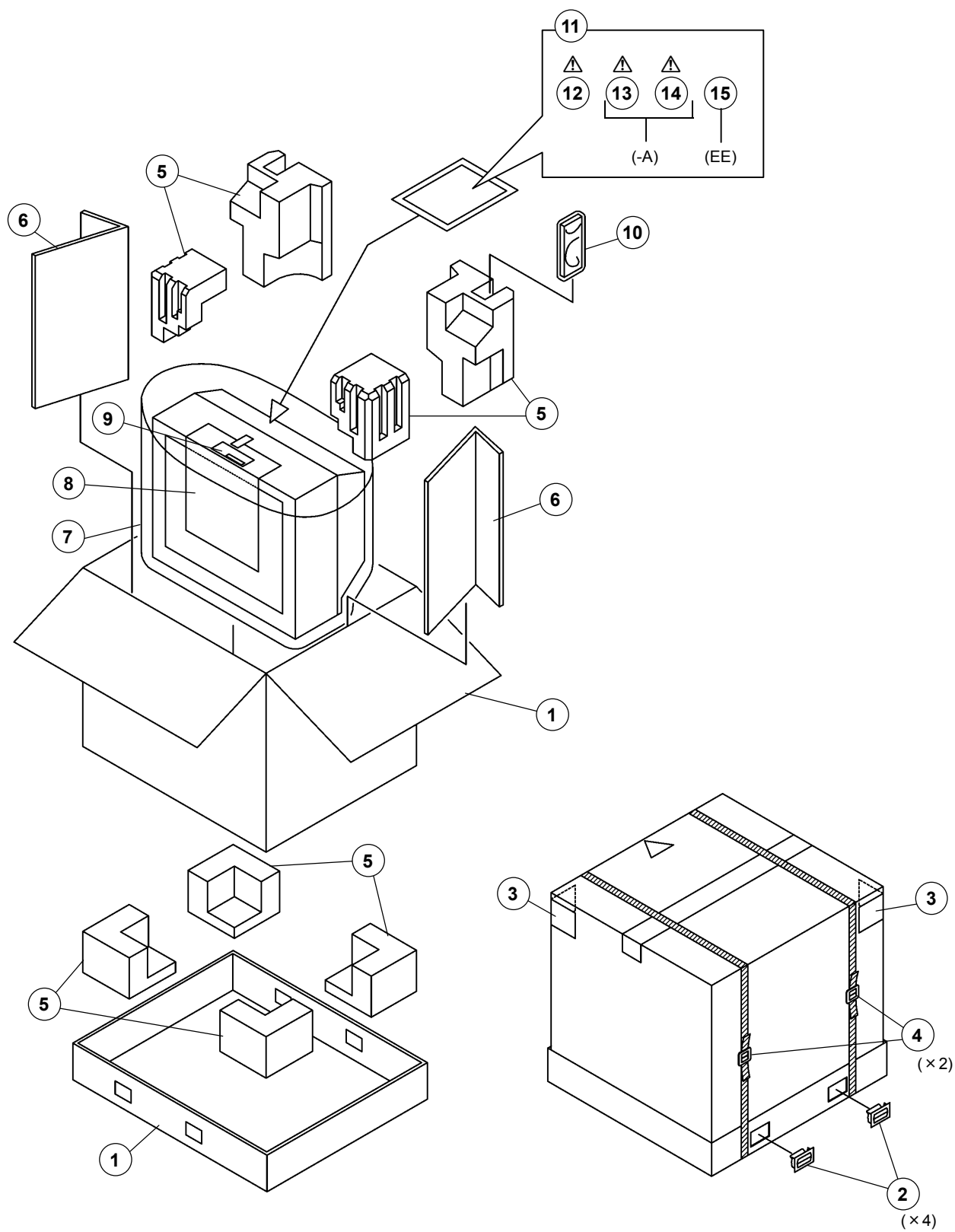
Symbol No.	Part No.	Part Name	Description
DIODE			
D0401	MA111-X	SI DIODE	
TRANSISTOR			
Q0101	2SA1037AK/QR/-X	SI TRANSISTOR	
Q0102	2SA1037AK/QR/-X	SI TRANSISTOR	
Q0201	2SA1037AK/QR/-X	SI TRANSISTOR	
Q0251	2SA1037AK/QR/-X	SI TRANSISTOR	
Q0252	2SA1037AK/QR/-X	SI TRANSISTOR	
Q0253	2SC2412K/QR/-X	SI TRANSISTOR	
Q0261	2SA1037AK/QR/-X	SI TRANSISTOR	
Q0271	2SA1037AK/QR/-X	SI TRANSISTOR	
Q0301	2SC2412K/QR/-X	SI TRANSISTOR	
Q0302	2SC2412K/QR/-X	SI TRANSISTOR	
Q0303	2SC2412K/QR/-X	SI TRANSISTOR	
IC			
IC0101	VPC3230D-QA-B3	IC	
IC0201	SAA4979H/V105	IC	
IC0202	SAA4994H/V1	IC	
IC0203	SAA4955HL/V1	IC	
IC0212	R1170H251B-X	IC	
IC0213	TC7WH32FK-X	IC	
IC0301	TDA9178T/N1-X	IC	
IC0401	S-80828CNNB-W	IC	
IC0402	TC7WH34FU-X	IC	
OTHERS			
CN0003	QGB1505K1-50	B TO B CONNE	
LC0010	NQR0313-009X	EMI FILTER	
LC0011	NQR0313-009X	EMI FILTER	
LC0012	NQR0313-009X	EMI FILTER	
LC0014	NQR0313-007X	EMI FILTER	
LC0015	NQR0313-007X	EMI FILTER	
X0101	QAX0655-001Z	CRYSTAL	
X0201	QAX0273-001Z	CRYSTAL	

REMOTE CONTROL UNIT PARTS LIST



△ Ref.No.	Part No.	Part Name.	Description
1	25-1168F	BATTERY COVER	(RM-C1030-1H/RM-C1031-2H)

PACKING



PACKING PARTS LIST

△ Ref.No.	Part No.	Part Name	Description
HV-34LZ			
1	GG10144-003A-H	PACING CASE ASSY	
2	CP30903-001	JOINT	(×4)
3	GG20025-001A-H	CORNER LABEL	(×2)
4	GG30032-001A-H	CLIP	(×2)
5	LC11084-001A	CUSHION ASSY	8pcs in 1set
6	GG20011-002A-H	SUPPORT PAD	(×2)
7	CP30967-006-H	POLY BAG	
8	LC30946-001A-H	CRT PROTECTOR	
9	LC30947-002A-H	CAUTION SHEET	
10	RM-C1030-1H	REMOCON UNIT	
11	CP30966-001-H	POLY BAG	
△ 12	LCT1200-001A-H	INST BOOK	

HV-34LZ/HK

1	GG10144-003A-H	PACING CASE ASSY	
2	CP30903-001	JOINT	(×4)
3	GG20025-001A-H	CORNER LABEL	(×2)
4	GG30032-001A-H	CLIP	(×2)
5	LC11084-001A	CUSHION ASSY	8pcs in 1set
6	GG20011-002A-H	SUPPORT PAD	(×2)
7	CP30967-006-H	POLY BAG	
8	LC30946-001A-H	CRT PROTECTOR	
9	LC30947-002A-H	CAUTION SHEET	
10	RM-C1031-2H	REMOCON UNIT	
11	CP30966-001-H	POLY BAG	
△ 12	LCT1201-001A-H	INST BOOK	

HV-34LZ/-A

1	GG10144-003A-H	PACING CASE ASSY	
2	CP30903-001	JOINT	(×4)
3	GG20025-001A-H	CORNER LABEL	(×2)
4	GG30032-001A-H	CLIP	(×2)
5	LC11084-001A	CUSHION ASSY	8pcs in 1set
6	GG20011-002A-H	SUPPORT PAD	(×2)
7	CP30967-006-H	POLY BAG	
8	LC30946-001A-H	CRT PROTECTOR	
9	LC30947-002A-H	CAUTION SHEET	
10	RM-C1030-1H	REMOCON UNIT	
11	CP30966-001-H	POLY BAG	
△ 12	LCT1200-001A-H	INST BOOK	
△ 13	LCT1203-001A-H	DIGEST MANUAL	
△ 14	QAM0055-001	CONVERSION PLUG	

HV-34LZ/EE

1	GG10144-003A-H	PACING CASE ASSY	
2	CP30903-001	JOINT	(×4)
3	GG20025-001A-H	CORNER LABEL	(×2)
4	GG30032-001A-H	CLIP	(×2)
5	LC11084-001A	CUSHION ASSY	8pcs in 1set
6	GG20011-002A-H	SUPPORT PAD	(×2)
7	CP30967-006-H	POLY BAG	
8	LC30946-001A-H	CRT PROTECTOR	
9	LC30947-002A-H	CAUTION SHEET	
10	RM-C1030-1H	REMOCON UNIT	
11	CP30966-001-H	POLY BAG	
△ 12	LCT1202-001A-H	INST BOOK	
15	BT-54012-2	WARRANTY CARD	

Memo

Memo



JVC

VICTOR COMPANY OF JAPAN, LIMITED

HOME AV NETWORK BUSINESS UNIT 12, 3-chome, Moriya-cho, Kanagawa-ku, Yokohama, Kanagawa-prefecture, 221-8528, Japan



Printed in Japan
0209 WPC
DP6058